

ASIAN ART

Wednesday 13 July 2016

Edinburgh



Bonhams



ASIAN ART

Wednesday 13 July 2016 at 11.00
22 Queen Street, Edinburgh

BONHAMS

22 Queen Street
Edinburgh EH2 1JX
+44 (0) 131 225 2266
+44 (0) 131 220 2547 fax
www.bonhams.com/edinburgh

VIEWING

Sunday 10 July 1pm to 4pm
Monday 11 July 10am to 4pm
Tuesday 12 July 10am to 4pm
Wednesday 13 July 9am to 11am

BIDS

+44 (0) 20 7447 7447
+44 (0) 20 7447 7401 fax
To bid via the internet please
visit bonhams.com

Please provide details of the lots
on which you wish to place bids
at least 24 hours prior to the
sale.

New bidders must also provide
proof of identity when submitting
bids. Failure to do this may
result in your bids not being
processed.

**Please note telephone bids
can only be accepted on lots
with a lower estimate in
excess of £500.**

ENQUIRIES

Ian Glennie
+44 (0) 131 240 2299
ian.glennie@bonhams.com

Asha Edwards
+44 (0) 131 240 2630
asha.edwards@bonhams.com

CUSTOMER SERVICES

Monday to Friday 8.30 to 18.00
+44 (0) 20 7447 7447

SALE NUMBER

23498

CATALOGUE

£10

**We would like to thank Ayako
Kobayashi for her contribution
in cataloguing Japanese lots
for this sale.**

Live online bidding is available for this sale

Please email bids@bonhams.com
with 'live bidding' in the
subject line 48 hours before the
auction to register for this
service. Please see page 2 for
bidder information including
after-sale collection and
shipment

**Please see back of catalogue
for important notice to
bidders**

ILLUSTRATIONS

Front cover: a selection of lots
from the sale
Inside front cover: Lot 215 (detail)
Inside back cover: Lot 50
Back cover: Lot 198 (detail)

IMPORTANT INFORMATION The United States

**Government has banned the
import of ivory into the USA.
Lots containing ivory are
indicated by the symbol Φ
printed beside the lot number
in this catalogue.**

**Please note that as a result
of recent legislation ruby and
jadeite gemstones of Burmese
(Myanmar) origin may not be
imported into the US. Rubies
and jadeite of non-Burmese
origin require certification
before import into the US.
Items affected are marked
with a symbol \approx**



Bonhams 1793 Limited

Registered No. 4326560
Registered Office: Montpelier Galleries
Montpelier Street, London SW7 1HH

+44 (0) 20 7393 3900
+44 (0) 20 7393 3905 fax

Bonhams 1793 Ltd Directors

Robert Brooks Co-Chairman,
Malcolm Barber Co-Chairman,
Colin Sheaf Deputy Chairman,
Matthew Girling CEO,
Patrick Meade Group Vice Chairman,
Geoffrey Davies, James Knight,
Caroline Oliphant.

Bonhams UK Ltd Directors

Colin Sheaf Chairman,
Harvey Cammell Deputy Chairman,
Jonathan Baddeley, Antony Bennett, Matthew
Bradbury, Lucinda Bredin, Simon Cottle,
Andrew Currie, Paul Davidson, Jean Ghika,
Charles Graham-Campbell, Miranda Leslie,
Richard Harvey, Robin Hereford, Asaph Hyman,
David Johnson, Charles Lanning,

Gordon McFarlan, Andrew McKenzie,
Simon Mitchell, Jeff Muse, Mike Neill,
Charlie O'Brien, Giles Peppiatt, Peter Rees,
Iain Rushbrook, John Sandon, Tim Schofield,
Veronique Scorer, James Stratton, Ralph Taylor,
Shahin Virani, David Williams,
Michael Wynell-Mayow, Suzannah Yip.

SALE INFORMATION

Edinburgh Salerooms

22 Queen Street, EH2 1JX
+44 (0) 131 225 2266
+44 (0) 131 220 2547 fax

Bonhams West of Scotland

Kirkhill House
Broom Road East
Newton Mearns
Glasgow G77 5LL
+44 (0) 141 223 8866
+44 (0) 141 223 8868 fax

London

101 New Bond Street, W1S 1SR
+44 (0) 20 7447 7447
+44 (0) 20 7447 7400 fax

Managing Director

Miranda Leslie

Chairman Scotland

Simon Miller

Valuations, Trusts & Estates

Charles Graham-Campbell
Grant MacDougall
Gordon McFarlan
Belinda Treble

The Scottish Sale

Miranda Leslie

Pictures

Chris Brickley
Colleen Bowen
Iain Byatt-Smith
Areti Chavale
Saskia Robertson

Jewellery & Silver

Clare Blatherwick
Gordon McFarlan
Fiona Hamilton
Alexis Tortolano
Leonie Armin
Rachel Bailey

Asian Art

Ian Glennie
Asha Edwards

European Ceramics & Glass

Katherine Wright

Wine

Thomas Gilbey

Books, Manuscripts & Maps

Henry Baggott
Georgia Williams

Arms & Armour

Kenneth Naples

Furniture, Clocks, Oriental Carpets, Works of Art & Scientific Instruments

Bruce Addison
Kenneth Naples
Georgia Williams
David Jones (consultant)

Toys and Collectors' Items

Nicholas Oddy (consultant)

Whisky

Martin Green
Charles MacLean (consultant)

The Sporting Sale

Henry Baggott
Georgia Williams

IMPORTANT NOTICE TO BUYERS

At our absolute discretion we may require a Bank reference and/or a Deposit from bidders, as a condition of allowing you to register to bid.

Please note that all furniture and large works of arts not collected from the saleroom by Friday 29th July 2016 will be transferred to our Bo'ness warehouse (see address below). Transfer and storage charges will apply. Prior to collection from the warehouse at Bo'Ness please contact Ian Glennie in the Edinburgh office
Tel:0131 240 2299 or Email:ian.glennie@bonhams.com.

Transfer £15 per item plus VAT
Storage £15 per item per week plus VAT

Items will be stored at John Pye Auctions
Address:
John Pye Auctions
Carriden
Bo'ness
West Lothian
EH51 9SF

JAPANESE ART

Lots 1 - 85





1



5

NETSUKE

1 Y Φ

FOUR IVORY NETSUKE

One by Anraku, Meiji
An uncut seal topped by a deer sitting on its haunches, signed Anraku, 3.1cm high, an oni seated with hands clasped around raised knee (one inlaid eye lacking), 4.1cm high, a second uncut seal of a puppy and barrel, 3.3cm high, and a karako rolling a massive snowball, inlaid hair, 4.2cm long

£800 - 1,000

2 Y Φ

FOUR IVORY NETSUKE

Meiji
A kneeling Fukurokuju with three boys playing around him, signed, 3.2cm high, two boys trying to wake a sleeping Hotei, signed, 4.8cm long, a seated Daruma stretching his arms, signed, 4.3cm high, and a puppy wearing a ribbon and playing with a ball, 3.3cm high

£500 - 700

3

A GOLD LACQUER FOUR-COMPARTMENT INRO AND TWO WOOD EXAMPLES

Meiji
The first decorated with a song bird on a flowering prunus branch below a full moon, in gold and silver *hiramake-i* and *takamaki-e*, with filigree decorated ojime, 8.4cm long, together with a wooden three-compartment inro carved to each side with a curtain raised to reveal Fukurokuju and Hotei, 7.6cm long, and another wooden three-compartment inro with incised design of a dragon emerging from clouds over stormy seas, signed, 8.5cm long

£500 - 700

The first two purchased from Lempertz in June 2001.

4 Y Φ

SEVEN NETSUKE

Meiji
A marine ivory demon standing in ragged clothes, grimacing and chewing on long leaves, signed and with inlaid horn eyes, 7.5cm high, a wooden seated boy holding an ivory ball in a bag, 3.9cm high, a wooden trick netsuke of a ratcatcher with an ivory rat popping out of the box, (break), 4.6cm high, a marine ivory example carved as a tiny man resting against a giant boulder, 2.8cm high, an ivory performing monkey in costume and with fan, 3.1cm high, an antler reclining buffalo with inlaid horn eyes, 5.7cm long, and an ivory rearing horse standing on its hind legs, 4.6cm high

£500 - 700

5

A WOOD NETSUKE OF A SHISHI

Edo, early 19th century
Seated, its head turned to the left as it scratches its chin with one hind paw, its forelegs outstretched and its curly tail rising to meet its mane, its body inlaid with shell florets and its eyes of shell with dark pupils, 6cm wide

£500 - 600

6

FOUR EARLY LACQUERED INRO

17th and 18th century
The first formed of stitched cherry bark with three cases, lacquered with a lake scene and two crows flying beside a four line inscription, signed Kogyokusai, with bone ojime and *guri*-lacquer manju of chrysanthemum form, 7cm high, a red lacquer two-case inro carved in Kamakura-*bori* with figures in a landscape, 7.6cm high, a black lacquer four-case inro lacquered and inlaid in Somada style with a well beneath a paulownia tree, signed *Kajikawa saku* with red pot seal, the fourth lacquered and inlaid on the matt black ground with a shishi running over a low table, the interior of red lacquer, 7.6cm high

£600 - 800

7 Y Φ

FOUR IVORY NETSUKE

Edo/Meiji
A standing monk with large straw hat on his back, 7.2cm high, a laughing Hotei standing with one foot on the other, 6.8cm high, a boy seated with a large cloth sack, 3.2cm high and an Okame noh mask, signed, 3.2cm high

£300 - 500



2

8 Y Φ

SIX IVORY AND MARINE IVORY NETSUKE AND A SMALL JADE CARVING

Meiji

Two ivory karakuri netsuke of lotus pods with emerging shoots, 3.8cm and 2.7cm high, an ivory gourd, 5.1cm long, a marine ivory finger citron, 6.3cm high, a reclining ivory animal, 4.8cm high, an ivory double-headed temple bell, 2.4cm high, together with a grey jade monkey, seated and holding a peach branch, 4cm high

£300 - 500

9

TWO OJIME

Meiji

A shibayama example decorated with a bee and white chrysanthemums inlaid in gold lacquer, 1.4cm high, and a barrel-shaped bead cast with a heron in a lily pond, in white metal, 2.7cm long

£250 - 350

10

SIX NETSUKE

Meiji

A blue and white Hirado porcelain reclining lion-dog, 4.5cm long, a bronze filigree netsuke formed as a peach, 4cm long, a kagamibuta example in wood, bone and inlaid iron, depicting a frog on a pond, 4.3cm diameter, a second kagamibuta in wood and bronze, with incised tortoise design, signed, 3.7cm diameter, an oval manju netsuke in bronze with gilt details of flowering plants, 4.3cm long, and another manju bronze example, each half is cast with a pair of shishi among peonies, 4.6cm diameter

£300 - 500

11 Y Φ

FOUR ANIMAL NETSUKE

Edo/Meiji

An ivory reclining lion-dog, 6.5cm long, an ivory goat with inlaid horn eyes, 5.4cm long, an antler carved as a pair of rabbits with inlaid horn eyes, 2.9cm high, and an antler monkey holding a large peach, 2.9cm high

£300 - 500

12

A WOOD NETSUKE OF A RAT ON A BROOM

18th century

The animal crouches on the bristles of a bamboo handled broom, inlaid eyes, 8cm wide

£250 - 350

13 Y Φ

SEVEN IVORY AND MARINE IVORY NETSUKE

Meiji

The first carved as three men resting beside a giant drum, 5cm long, another of a street performer carrying his monkey and drum, signed, (repaired), 4.6cm high, a courtier and boy catching a minogame, signed, (breaks), 5cm high, a seated man with fan, 3.7cm high, and three of Daikukoten, one holding a tablet, one sitting and one playing a board game,

£600 - 700



14

14 Y Φ

AN IVORY NETSUKE OF A LAUGHING MAN

By Hidemasa, Meiji

Carved as a seated scholar leaning on low table, his arms crossed over his chest and sleeves flying back as he laughs, 3.9cm high

£400 - 600



15

IVORIES

15 Y Φ

AN IVORY OKIMONO OF JUROJIN

By Kyoji, Meiji

The Lucky God of Longevity stands in flowing and ornate robes, holding a gnarled staff and tortoise, *15.3cm high*

£300 - 500

16 Y Φ

AN IVORY CANE HANDLE

By Juzan, Meiji

Carved with a samurai jumping out of a pine tree to fight a five sword-wielding tengu, signed, *30.5cm long, with metal fitting*

£500 - 600

17 Y Φ

AN IVORY OKIMONO AND THREE OTHER IVORY CARVINGS

Meiji

A craftsman and boy crouch down to repair a spoked wheel, signed Hiroyuki, *7.5cm long*, a group of monks carry a giant temple bell, signed Kazuyuki, *6.4cm diameter*, a netsuke of Hotei seated with a boy holding a Daruma doll, *3.8cm wide*, and a roaring lion (tail lacking), *16.5cm long, and on wooden stand*

£300 - 500

18 Y Φ

FOUR IVORY FIGURAL OKIMONO AND A CHINESE IVORY CARD CASE

19th century

A standing man feeding grapes to a dove on his shoulder, signed, *19cm high*, a marine ivory Daikokuten holding a separately carved Bishamonten aloft, *19cm high*, a marine ivory farmer and son digging vegetables, signed Masahisa, *10cm high*, and a marine ivory dancing figure with straw hat and broom, *9cm high*, together with a Canton export ivory card case deeply carved with figures at leisure in a terraced village, *10.8cm long*

£500 - 700



19

19 Y Φ

AN IVORY OKIMONO OF GAMA SENNIN

By Tsunenobu, Meiji

Finely carved as an old man with long beard looking down at his toad as it rests on a rock, the sage is dressed in a densely patterned robe and holds a staff and basket, signed, *12cm high*

£500 - 700

20 Y Φ

AN IVORY OKIMONO FIGURE GROUP

By Masayuki, Meiji

One peasant kneels to measure out rice on a reed mat while another stands to empty it into a basket, signed, *10.5cm high, and on pierced wooden stand*

£300 - 500

21 Y Φ

AN IVORY OKIMONO OF FUKUROKUJU

By Gyokushin, Meiji

The immortal stands in flowing, flower-decorated robes, he holds a scroll in one hand and a fan in the other, seal in red lacquer plaque, signed, *26.5cm high*

£300 - 500

22

A MOTHER-OF-PEARL CRANE

Meiji

Carved in wood and overlaid with mother-of-pearl feathers, the red crested bird stands securely on webbed feet, the back opens to reveal a small interior compartment, *14cm high*

£200 - 300



21



22



23

23 Y Φ

AN IVORY AND MARINE IVORY OKIMONO OF A WOODSMAN

By Shin Shu, Meiji

The figure balances at the top of the felled tree trunk as he works backwards with his saw, signed to base,

17cm high, and with wooden base

£600 - 800

24 Y Φ

AN IVORY FIGURE OF A FARMER

By Hyashie Gyoku, Meiji

Carved from a single piece of ivory, the man depicted walking with a sheaf of wheat in one hand and corn cobs over his shoulder, signed,

18cm high

£400 - 600

25 Y Φ

AN IVORY FIGURE OF A FARMER

By Gyokko, Meiji

The partly sectional figure of a man stands looking into the distance, holding a cockerel and with a bundle of wood on his back, signed,

18cm high

£400 - 600

26 Y Φ

A SECTIONAL IVORY AND MARINE IVORY OKIMONO OF A MAN AND MONKEY

By Shin No, Meiji

A man stands with a monkey at his feet, the animal watching the man's fruiting branch, signed,

24cm high

£300 - 400

27 Y Φ

A BOXWOOD AND IVORY OKIMONO OF A WOODSMAN

By Mitsu, Meiji

Depicting a peasant sitting on a bundle of wood to smoke tobacco (damages), signed in red lacquer plaque, signed,

13cm high

£300 - 500

28 Y Φ

A SECTIONAL IVORY AND MARINE IVORY OKIMONO

By Gyokushin, Meiji

A group of two men with baskets, one climbing a large boulder, signed Gyokushin,

13.7cm high

£400 - 600

29 Y Φ

FOUR SECTIONAL FIGURAL OKIMONO IN IVORY AND MARINE IVORY

Meiji

A marine ivory figure of a man carrying a basket of pumpkins, possibly signed Toshin, *23cm high*, a marine ivory peasant with staff and bundle of fruit, signed Mitsu Gyoku, *18cm high*, an ivory group of a sage holding aloft a statue of Kannon while his boy holds his pipe, *12.5cm high*, and a marine and ivory farmer holding a shovel, signed Masakazu, *11.3cm high*

£400 - 600

30 Y Φ

FOUR SMALL IVORY OKIMONO

Meiji

A pair of kneeling bijin, one playing a shamisen, the other holding an open fan, *each 6.6cm high*, a Shoulao and boy, *7.5cm high*, and a farmer and son (tool lacking), *7.9cm high*

£250 - 300

WORKS OF ART

31 *

A GOLD LACQUER DOCUMENT BOX, BUNKO

Meiji/Taisho

The *nashiji* ground lacquered in gold *takamaki-e* with details of silver and gold *togidashi maki-e*, highlights of *kirikane* and gold foil with a bold design of a shishi leaning against a rock amid peonies by a waterfall continuing on the sides, the interior decorated with a peony-form headdress,

15.2cm high, 40.5cm wide, 33cm deep, with wood storage box

£600 - 700

32 Y Φ

FIVE NETSUKE AND TWO ANTLER HANDLES

Meiji

An ivory shishi climbing on a large ball, 4cm high, a second similar example, 4cm high, a nut carved and pierced as fruiting peach branches, 4.1cm long, a marine ivory netsuke of a persimmon and millet on a leaf, 4.3cm long, an ivory hexagonal manju pierced to reveal the Three Wise Monkeys, 2.9cm diameter, an antler handle carved as a rat on top of a furled lotus leaf, 12cm long, another carved as a rat on top of a radish, 7.5cm long, and an ivory plaque or box cover carved as two mice among fabric folds, 5cm long (8).

£500 - 700

33

A GILT LACQUER FIVE-TIER BOX, JUBAKO

Meiji

Of rectangular section with two covers, the covers and front and back sides of the stacked boxes decorated with a continuous design of the Three Friends of Winter, all in gold *hiramaki-e* and *takamaki-e* on a *nashiji* ground, total height 41cm, and with fitted wooden case

£800 - 1,200

34

A SET OF LACQUER SAKE CUPS AND A GURI-LACQUER INCENSE BOX AND COVER, KOGO

Meiji

Three graduated cups decorated with the imperial paulownia flower in gold *hiramake-i* on a red lacquer ground, on reverse a four character mark to cardinal points on the rim in gold lacquer, 14.9cm, 13.3cm and 14.9cm diameter, and in wooden box, together with a domed circular box, deeply carved with stylised design through numerous layers of red, black and ochre lacquer, 5.8cm diameter

£250 - 350

35

A LACQUER BOWL AND COVER

Meiji

The bowl raised on a high foot, the exterior decorated with scrolling lotus in gold lacquer on a black ground, the interior in red lacquer, (damages), 19cm high

£500 - 700

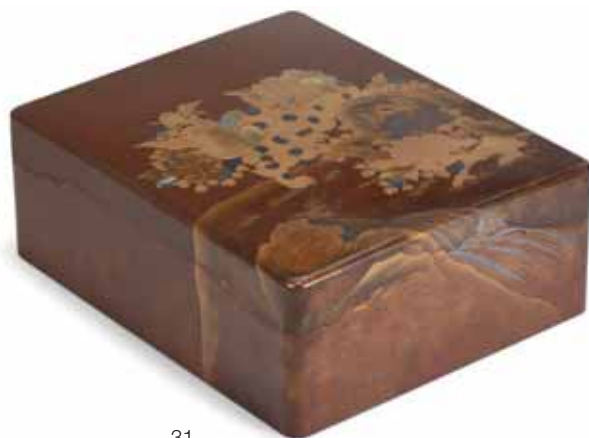
36

A CARVED HARDWOOD PLAQUE

Meiji

Of rectangular form and carved deeply with a terrapin and its young amidst flowering lotus, signed, 34cm x 49cm

£400 - 600



31



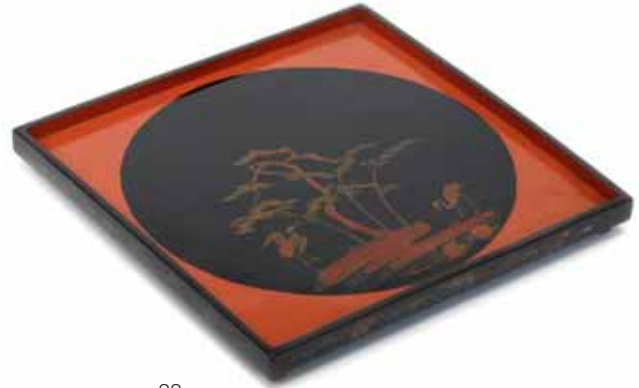
33 (detail)



33



37



38

37
AN UNUSUAL BURLWOOD AND LACQUER TRAY

Meiji
 The raised rim of meandering oval outline, formed from a section of a natural burr, the surface painted in gilt and red with a three-clawed dragon clutching a pearl within vaporous swirling clouds, on a mottled red, black and ochre abstract marbled lacquer ground, the effect known in Chinese as xipi, meaning 'rhinoceros skin', black lacquered base,
38.5cms wide

£500 - 700

38 *
A SQUARE FOOTED LACQUER TRAY

Edo, 18th/19th century
 Lacquered in gold *hiramaki-e* and *e-nashiji* with central circular black lacquer panel depicting two cranes and two turtles besides pine growing on the banks of stream, on a red lacquer ground, the sides of the tray with stylised foliage,
3.2cm high, 32.7cm wide, 32.5cm deep, and with wood storage box

£600 - 800

39
A PAIR OF CLOISONNÉ INCENSE BURNER STANDS

Late Meiji
 With removable wide flat plateau decorated with phoenix, the vases with birds by a waterfall and on a base section with bracket feet, (damages),
45cm high

£300 - 500

40
A CLOISONNÉ VASE AND COVER

Meiji
 The exterior decorated all over with bamboo leaves and stems in blues and greens on a black ground, with formal bands at neck and foot, the interior in blue enamel,
19.5cm high

£200 - 300

Provenance: From the collection formed by Sir Claud Severn, whilst Colonial Secretary in Hong Kong, circa 1912-1925. Thence by descent.

41
A RED GUILLOCHÉ AND CLOISONNÉ VASE

Meiji
 Of ovoid form with a cloisonné chidori among brightly coloured peony stems on a translucent red ground overlaid on an incised design of another songbird in bamboo,
21.5cm high

£250 - 350



42

BRONZE & METALWARES

42

A LARGE BRONZE TIGER

By Genryusai Seya, Meiji
Naturalistically modelled prowling with head raised to roar, cast with textured markings, signed on underside, 60cm long

£500 - 700

43

A BRONZE TERRAPIN GROUP

Meiji
A small terrapin rises on its rear legs to clamber on the back of another separately cast larger reptile, signed, 13cm long

£200 - 300

44

FIVE TSUBA AND THREE FUCHI

Meiji
A round pierced and inlaid tsuba, decorated with panels of bamboo, prunus chrysanthemum and orchid, 7.1cm long, a round inlaid tsuba decorated with two chidori on flowering prunus, signed, 7.7cm long, a round pierced and inlaid example bearing a stylised flower, signed, 7.4cm long, two quatrefoil-shaped and inlaid tsuba, one decorated with three horses by a river, one with quail by a river, 8.5cm and 7.6cm long, together with three inlaid fuchi decorated with birds, dragons in waves and shells, with paulownia wood boxes

£300 - 400

45

EIGHT IRON TSUBA AND ONE BRASS TSUBA

Edo and Meiji
Comprising four iron *sukashi* tsuba, one *Kyo-sukashi*, in the form of a crane with spread wings, 7cm, one Owari, pierced with flying birds and ginger shoots, 7cm, one Ko-Shoami carved with a crane over waves, 7cm, and one in the form of a crane, with gilt details, signed Jakushi, 7.6cm, a large iron tsuba decorated in brass relief inlay with armour and a signpost amid clouds, 8.5cm, another tsuba inlaid with herons among reeds by a stream, signed Hokkokusai Masahide, 7.6cm, two Mito tsuba, one carved and inlaid with Gama *rennin*, 7.3cm, the other with a kneeling sage, 7cm, an oval brass tsuba carved and partly pierced with an eagle about to attack a monkey hiding in a cave, signed Hiroyoshi with a *kao*, 6.7cm diameter

£600 - 800

46

AN INLAID BRONZE VASE

Meiji
The four-sided pear-shaped vase with moulded dragon-head handles, the larger sides decorated with a village below pine trees opposing lotus leaves and flowers, butterfly patterns to the narrow sides and triangular bands to neck and foot, all in copper, silver and shakudo flat inlay, 19.5cm high

£400 - 600



47

47

A PAIR OF INLAID BRONZE VASES

By the Hattori Company, Meiji
Each of slender gently tapering rectangular form, decorated with birds among willow, lotus, bamboo, prunus and chrysanthemum in copper, silver and shakudo flat and relief inlay, company mark to base, 24.2cm high

£1,000 - 1,500

48

AN INLAID BRONZE VASE

By the Hattori Company, Meiji
Of square baluster form and raised on bracket feet, each side decorated with birds and autumn trees below scrolling band at neck, all in copper, silver and shakudo flat inlay, company mark to base, 20cm high

£400 - 600



49

49 Y Φ

A LARGE BRONZE ELEPHANT AND TIGERS GROUP

By Genryusai Seiya, Meiji

Naturalistically modelled, the bull elephant rears up on his hind legs to stamp on one tiger below, a second tiger attacks the elephant's back, ivory tusks, signed in seal to underside, *33cm high, 46cm long*

£600 - 800

50

A BRONZE OKIMONO OF A RABBIT

Meiji

The animal cast sitting up on its hind legs with ears back and fore paws held close to its chest, signed to base, *25cm high*

£500 - 700

51

A SILVERED BRONZE MIRROR AND A BRONZE BELL

The mirror back case deeply recessed and cast with a stylised scene of a tortoise and two cranes beneath pine trees, *12.7cm diameter, weight 960g*, together with a bell suspended from a double-dragon hoop and decorated with panels of studs and inscriptions, *13cm high, weight 695g*

£300 - 500

52 Y Φ

JEWELLERY AND OTHER COLLECTABLES

Meiji/Taisho

An ivory brooch carved as Hotei, signed Kozan, *5cm long*, a pair of Komai-style cufflinks, a bronze and shakudo sword-fitting of a helmet mounted as a brooch, an inlaid bronze sword-fitting of a mallet, a white metal and brass belt plaque depicting an Okina mask, a boxed set of silver cocktail spoons, *each 22cm long*, a brown lacquer fine-toothed comb, and five further wooden combs,

£250 - 350



50

53

A PAIR OF INLAID BRONZE VASES

Meiji

Each of baluster form raised on three mask and tongue supports joined by a stepped dais, decorated with samurai and birds among autumn leaves in copper, silver and gold relief inlay, with further flat inlay designs of leaves and scrolling motifs, *35cm high*

£500 - 700

54

A BRONZE KORO AND COVER

Meiji

The body decorated with scenes of geese and chidori in high relief, the separately cast dragon handles snarling up at the finial modelled as an eagle alighting on a branch, all raised on four mask and tongue feet joined by a circular base, *64cm high*

£300 - 500

55

A BRONZE BIRD INCENSE BURNER

Meiji

The long beaked bird stands upon a rocky outcrop with head turned to look behind, the separately cast wings forming the censer cover, *15cm high*

£200 - 300



58

56 Y Φ

A BRONZE ELEPHANT AND TIGER GROUP

Meiji

The elephant raises a foot to trample one tiger while another jumps to attack his back, (one tusk broken),
20cm long

£200 - 300

57

A PAIR OF LARGE INLAID BRONZE VASES

Meiji

The long flaring necks decorated with phoenix and scrolling foliage in flat inlay and mounted with dragon handles, the bodies bearing geese among reeds and chidori eating pomegranate in high relief,
66cm high

£400 - 600

58

A PAIR OF TWIN HANDLED KORO WITH COVERS ON STANDS

Meiji

Each of squat oviform with pierced cover formed with prunus branches and raised on similarly designed stands,
20cm high

£300 - 500

59

A BRONZE FIGURE OF HOTEI

By Hideyama/Shuzan, Meiji

The Lucky God modelled with his robe open over his big belly, he holds a sake bottle in one hand, his other raised to point upwards, signed to reverse,
27.5cm high

£500 - 600



59



60

60 Y Φ

A SILVER AND SHIBAYAMA JARDINIÈRE

By Yoshinori, Meiji

The body inset with six gold lacquer panels inlaid with mother-of-pearl and stained ivory depicting different birds and flowers, framed by etched floral bands and spaced by elephant-head handles, the base signed in a gold lacquer reserve,
17.5cm high, 28cm wide

£4,000 - 6,000



63



61
A LARGE BRONZE JARDINIÈRE

By Seimin, Meiji

The lobed body decorated with opposing panels of a ho-o bird and kirin reserved on a densely patterned archaic ground, with pierced manji-pattern band at rim and square handles to the sides, all raised on lion-head supports with humpback stretchers, bearing *Dai Nippon Bunsei Nen Seimin Chu* mark to base, 38cm high, 45.5cm wide

£300 - 500

62 Y Φ

A PAIR OF SILVER, CLOISSONNÉ AND SHIBYAMA VASES

By Masayoshi, Meiji

Each of bottle form with flared necks and raised on a high foot bearing enamelled floral motifs, the body decorated with butterflies over prunus and lotus inlaid with stained ivory and mother-of-pearl in gold lacquer, signed in red lacquer plaque (cracks and minor losses), 17.8cm high, together with a pair of Kutani miniature vases depicting processions and landscape, 9cm high (4).

£400 - 600

63

A NEAR PAIR OF UNMARKED SILVER SAKE EWERS, CHOSI

One signed Yotsuya, Meiji

Each engraved with scrolling foliage to sides, spout and swing handle, raised on short tripod feet, each 20cm long, weight 16.42oz and 14.57oz

£800 - 1,200



64

64
A SILVER AND ENAMEL BALUSTER VASE

By Naomasa, Meiji

Of bottle form with flared neck and melon-form body raised on a high foot, all decorated in enamelled relief with flowering peony bushes between bands of flowering lotus, 26cm high

£2,000 - 3,000

65

AN INLAID BRONZE TSUBA AND TWO INLAID BRONZE FUCHI

Meiji

The tsuba decorated with a boat emerging from behind a rocky outcrop issuing a pine tree, with gold details, 6.5cm long, the larger fuchi decorated with a fan and foliage in copper, silver and shakudo in relief inlay, signed Hidemasa, 3.8cm long, and another showing a stream bank with similar inlay, signature can be read as Seigi, 3.6cm long

£250 - 350

66

A VERY LARGE BRONZE JARDINIÈRE ON WOOD STAND

Meiji

The oviform vessel relief decorated with a coiling dragon to one side and a phoenix to the other, raised on a wood stand with pierced apron raised on five supports joined by an under tier, jardinière 39cm high, stand 69cm high

£250 - 350



67

CERAMICS

**67
A LARGE SATSUMA VASE**

Meiji
 Depicting Kannon surrounded by rakan and attendants within a wooded landscape, with overlapping brocade patterns to neck, elaborate mark to base,
41cm high

£400 - 600

**68
A PAIR OF MINIATURE SATSUMA VASES**

Meiji, possibly by Chin Jukan
 Each of baluster form enamelled with panels of ladies and samurai reserved against a gilt brocade patterned ground with formal bands at the neck, signatures rubbed,
6.2cm high

£250 - 350

**69
A PAIR OF IMARI VASES**

Early 20th century
 Each of bottle form with wide necks, decorated with phoenix and floral roundels above panels of autumn leaves,
36cm high

£500 - 600



69

**70
A SATSUMA VASE AND A PAIR OF SATSUMA VASES**

By Kinkozan, Meiji
 Each signed to base, the first of ovoid form with moulded bands at neck, enamelled with opposing panels of a ladies in a riverside garden, chidori above, reserved on a ground of blue with gilt wisteria descending from the shoulder, *24cm high*, together with a pair of ovoid vases with slightly flaring necks enamelled with opposing panels of samurai and ladies on a veranda, reserved on a gilt diaper ground, *18cm high*

£600 - 800

**71
A MIRRORED PAIR OF FUKUGAWA VASES**

By The Scented Orchid Company
 Each of oviform decorated with a scene of sages and attendants meeting in a bamboo grove with lappet bands to rim and foot, in underglaze blue with red, green and gilt enamels, signed,
24.5cm high

£500 - 700

**72
A PAIR OF FLOOR STANDING IMARI VASES**

Meiji
 Each of baluster form with flaring necks, decorated with panels of birds among flowers, reserved on a floral ground, (one with damages), *91cm high, and on wooden stands*

£700 - 1,000



70



74

73

AN ARITA SAUCER DISH IN KAKIEMON PALETTE

19th century

The central roundel depicting peony issuing from rockwork, the rim decorated with pomegranate and prunus among rocks, *31.2cm diameter*

£250 - 350

74

A SATSUMA BOTTLE VASE

By Taizan, Meiji

The body finely enamelled with opposing scenes of ladies and scholars teaching children spaced by peony and orchid, reserved on a ground of overlapping brocade and with netted pattern to neck, impressed mark to base, *22.5cm high*

£400 - 600

75

AN IMARI JAR AND COVER

Meiji

Of octagonal section and decorated in panels of chrysanthemum and peony, (cover restored), *53cm high*

£300 - 500

76

TWO LARGE IMARI CHARGERS

Meiji

The first with central roundel depicting a vase of flowers within radiating panels with phoenix, shishi and flowers, *60.5cm diameter*, the second enamelled with overlapping abstract landscape panels, (old kiln caused stress cracking), *61.5cm diameter*

£500 - 700

77

TWO LARGE SATSUMA BOWLS

One by Futaji, Meiji/Taisho

Each with lobed rim, the first enamelled with a cockerel and hen in autumn foliage and flowers, with further birds and flowers around exterior, signed, *31.5cm diameter*, the second decorated with a pair of quail among flowers by a riverside, the Three Friends of Winter on exterior, signed Futaji and stamped 'Made in Japan', *30cm diameter*

£400 - 600

78

A SATSUMA MODEL OF AN EAGLE AND ANOTHER OF A BOAR

Meiji

The bird of prey perched with its wings drawn in on an elaborately decorated brocade cloth partially draped over a tall wood stand supported on a square four cabriole-legged base, (restorations), *34.3cm high*, the sow standing with its two young on a rocky mound painted with a variety of foliage and narcissus plants, in front of a gnarled tree trunk, painted with trailing vine and applied with leafy foliage in relief, (restorations), *35cm high*

£600 - 800



80

PICTURES & PRINTS

79

TOYOHARA CHIKANOBU (1838–1912)

Three triptychs and one diptych of woodblock prints

Each depicting three-quarter length portraits of groups of named Kabuki actors in famous theatrical roles, signed *Toyohara Chikanobu hitsu*,

each oban-sized sheet approximately 36cm x 22cm, and framed and glazed

£400 - 600

Provenance: The Studio of Eduardo Paolozzi.

In 1969 Paolozzi travelled to Japan to make a large steel sculpture, 'Osaka Steel' for the World Expo of 1970 in Osaka. The sculpture was made in Japan and therefore Paolozzi took the opportunity to live there while the sculpture was produced. Paolozzi immersed himself in Japanese culture, taking part in Judo, visiting the Kabuki theatre and watching Sumo wrestling. He purchased quantities of Japanese toys, now in the Krazy Kat Arkive in the Victoria and Albert Museum. It was during this period in Japan that Paolozzi purchased these four kabuki woodblock prints.

80

JAPANESE SCHOOL, A VERTICAL SCROLL

Meiji

A standing lady in traditional kimono holding a shamisen, with collectors stamps, in colours on silk,

image 94cm x 30cm, and framed and glazed

£500 - 700

81 *

A SILK EMBROIDERY

Meiji

Embroidered in various coloured floss silk threads, imitating a *kakeiku* (vertical hanging scroll) depicting a white hawk tethered to a wood perch and attempting to undo the silk cord with its beak,

88cm x 33cm, framed and glazed,

£500 - 600



81

82 Y Φ

A PAIR OF SHIBAYAMA AND LACQUER NARROW PANELS

Meiji

Black lacquer ground inlaid with figures and birds below flowering plum branches, in bone and ivory, (some loose parts and losses),

147cm high

£400 - 600

83

A COLLECTION OF WOODBLOCK PRINTS

Utagawa Kuniyoshi (1797-1861), Kunitsuna Utagawa (1805-68), and Toyohara Chikanobu (1838–1912)

Two by Kuniyoshi; a couple beneath a cherry tree, and a reclining lady (framed): two panels of a larger image by Kunitsuna, warriors on a boat: and a print and two triptychs by Chikanobu; a lady shopping for flowers, and two scenes of bijin at leisure, *each approximately 35.5cm x 25cm, one framed and glazed*

£400 - 600

84

FIVE WOODBLOCK PRINTS

Utagawa Kunisada (1786-1865)

Two ladies in a courtyard, two samurai and a white wolf, a geisha and her lover, a lady leaning over a veranda, and a lady pouring sake for a samurai,

each oban, approximately 36.5cm x 25cm

£400 - 600



85

85 Y Φ

**A TWO-PANEL FOLDING SHIBAYAMA AND LACQUER SCREEN
INLAID WITH BONE AND IVORY**

Meiji

Both panels decorated in high relief with a continuous scene of an ornate basket containing an ikebana (flower arrangement) of spring and autumnal blooms suspended above a stream on the left panel and three sparrows flying beneath trailing branches of cherry blossoms, with rose mallows and lilies issuing from the banks of a stream in the foreground, framed within a blue-lacquered ground border decorated in gold hiramaki-e with floral and stylised bird medallions, above smaller wood panels carved with carp, the left panel signed with ivory seal, the reverse painted with a flowering cherry tree on a red-lacquered ground,
184cm x 171cm

£700 - 900



CHINESE ART

Lots 86 - 222





86

SNUFF BOTTLES

86 A BANDED AGATE SNUFF BOTTLE

19th century
Of flattened round form one side carved in high relief with two boys trying to catch bats, in a smoky lavender stone with carved white layer, brown agate stopper,
7cm high

£300 - 500



87

87 A FINE INSIDE-PAINTED GLASS SNUFF BOTTLE

By Yan Yutian, dated 1895
One side painted with two magpies perched on a rock, the other with a chrysanthemum spray issuing from a vessel, signed Yan Yutian, yiwei year, seal of the artist, (stopper missing),
6cm high

£600 - 800



91

88 A FAMILLE ROSE RELIEF MOULDED SNUFF BOTTLE

Bearing Chenghua four-character mark but 19th century
The pear-shape bottle decorated all over with a scene figures in a walled garden, (stopper lacking),
7cm high

£250 - 350

89

A FAMILLE ROSE PORCELAIN SNUFF BOTTLE

Bearing Qianlong seal mark and possibly of the period
Of pear-shape and relief moulded with a continuous scene of boys at play in a rocky landscape on a wave ground,
7.5cm high

£300 - 500

90

AN OVERLAY GLASS SNUFF BOTTLE AND ANOTHER

19th century
The clear glass with a black overlay carved as various shou characters, *6.5cm high*, together with an inside painted and overlaid snuff bottle,
7.5cm high

£300 - 500

91

A RELIEF MOULDED PORCELAIN SNUFF BOTTLE

Bearing Jiaqing seal mark and of the period
Relief moulded to one side with several figures, one rising from waves to present a basket of fruit to a figure on a boat, the other side featuring various immortals upon clouds, all decorated in famille rose enamels,
5.8cm high

£500 - 700

JADES & HARDSTONES

92

A LARGE SOAPSTONE FIGURE OF GUANYIN

19th century

The Goddess of Compassion is carved standing calmly with scroll in hand upon the back of a dragon-fish among the waves, 57cm high

£800 - 1,200

93 ≈

A JADEITE BANGLE

The stone mottled with translucent white and spinach green, 7.5cm diameter

£250 - 350

94

A JADE WINE EWER

Carved as an archaistic-style rectangular vessel with phoenix-headed spout, decorated with taotie masks, in grey-green stone, 10cm high

£300 - 500

95 ≈

A JADEITE BEAD NECKLACE, BAR-BROOCH AND RING

The necklace formed of sixty six graduated spherical beads, the brooch set with a small diamond and in fifteen carat gold, the ring with cabochon stone in unmarked gold

£400 - 600

96 Ω

A JADE BOY AND BUFFALO GROUP

A reclining mother and calf buffalo are tended by a small boy, in pale green-grey stone with russet inclusions, 7cm long

£1,500 - 2,000



92



100



102



101

97

A LARGE GREEN HARDSTONE BOWL

The thin walls carved to exterior with panels of stylised flowers spaced by shou roundels, all raised on straight foot, the stone in mottled opaque and translucent dark green to khaki tones,
27cm diameter

£800 - 1,200

98

A JADE CARVING OF A SCHOLAR

19th century
The male figure standing in long flowing robes, one hand raising a cup aloft in toast, (raised arm broken at wrist), in a pale green stone with white and russet inclusions, wood stand,
stone 10cm high

£200 - 300

99 ^Ω

A WHITE AND RUSSET JADE PENDANT OF GUANYIN

The Goddess of Mercy holds a sceptre and prayer beads and sits on a rocky outcrop, a lotus vase sits beside her,
6.8cm high

£1,000 - 1,200



103

100 ^Ω

A PALE CELADON JADE DEER AND LINGZHI

A deer reclining among rocks with a lingzhi in its mouth, possibly carved as a brush rest,
15cm long

£1,800 - 2,200

101 ^Ω

A JADE BOY AND CAT

The boy crouches down to pet the cat while holding a large lingzhi fungus over his shoulder, in pale jade with russet inclusions,
6cm high

£1,000 - 1,500

102 ^Ω

A SET OF SIX JADE BELT PLAQUES

Comprising two larger rectangular and two teardrop-shaped plaques, each carved and pierced with a goose among lotus flowers and leaves, spaced by two narrow plaques carved and pierced with lotus flowers, all in pale stone with dark caramel-coloured inclusions,
each rectangular plaque 4.8cm long

£5,000 - 7,000

103 ^Ω

A PALE CELADON JADE PHOENIX AND PEACH

Intricately pierced and carved as a phoenix perched on rocks which issuing peach tree, the bird grasps a branch in its beak,
10cm long

£3,000 - 5,000



104



105

BRONZE & METALWARES

104

A BRONZE INCENSE BURNER

18th century

Of bombé form raised on a stepped foot, with ruyi and scroll handles, cast with six-character Xuande mark to base, *8cm high, 18cm wide, weight 1610g*

£1,000 - 1,500

105

A BRONZE INCENSE BURNER ON WOODEN STAND

19th century

Of typical bombé tripod form with upward curving handles and cast six-character Xuande mark to base, on a carved and pierced tripod wooden stand, *censer 7.5cm high, total height 10.5cm*

£800 - 1,200

106

A LARGE BRONZE BELL

Cast with a double dragon head suspension ring and decorated with four panels of nine ribbed knobs and two lotus pod roundels, *35cm high, weight 8kg*

£800 - 1,200

107

A POLISHED BRONZE ALTAR VESSEL, DOU

Qianlong seal mark and of the period. The stem bowl raised on a high splayed hollow foot, cast with decorative bands of curving and archaic geometric patterns, *17.5cm high*

£3,000 - 5,000

For a similar example see Christie's London, 20 September 2011.

108

A BRONZE STATUE OF SHAKYAMUNI

Thai

The historic Buddha sits in meditation on a lotus dais in bhumisparsha mudra at the moment of enlightenment, *46cm high*

£500 - 600

109

A BRONZE INCENSE BURNER ON WOOD STAND AND ANOTHER

19th century

The first of typical bombé tripod form with rising handles, bearing a Xuande mark within large dragon roundel, and raised on a carved wooden stand, *total height 15.5cm*, together with a lobed and flaring censer on three elephant-head feet, bearing unusual four-character seal mark, *11cm high*

£500 - 700

110

A BRONZE TRIPOD INCENSE BURNER

Of oviform with twin loop handles and engraved marquise shaped panels with figures in landscapes, marked with zhuan shu script mark, Yong Cun Zhen Wan, (Eternal Preservation, Treasured Appreciation), *13.5cm high, 14cm diameter, weight 1435g*

£500 - 800



107



111

111

A LACQUERED BRONZE SEATED BUDDHA

18th century

Seated in meditation with hands in vajra mudra, the folds of his robe pooling at his feet, covered in dark lacquer with traces of red and gold pigment,
20cm high

£500 - 700

112

A BRONZE SHORT SWORD

Eastern Zhou/Warring States period

The blade with median ridge planed on either side to sharp edges, the wing-form guard under two raised rings below the concave pommel, the blade and grip with patches of malachite and azurite patina,

40cm long, and in fitted box

£300 - 500

113

A BRONZE BUDDHA

Korean, Joseon (1392-1897)

Cast seated in meditation on a lotus dais, his hands on top of each other in his lap, with traces of gilt and red pigment,
21cm high

£400 - 600

114

A BRONZE STATUE OF A BUDDHIST MONK

Ming

The figure is cast standing with hands folded in front of his chest, his expression serene, raised on a lotus base (casting flaws),
38cm high

£400 - 600

115

A LARGE TRIPOD INCENSE BURNER

20th century

Of bombé form with twin loop handles and on three tapering supports,
16cm high, 23cm diameter,

£300 - 500

116

A BRONZE INCENSE BURNER

19th century

Of circular section imitating a drum, three bosses to the ruyi design border, raised on three cylindrical feet, marked in relief to the base with a chilong dragon,
13.5cm diameter, weight 669g

£300 - 500



113



114



117



117

A PAIR OF GILT BRONZE LION DOGS

19th century

Each heavy animal cast on all-fours with tail curling over the back, head raised with snarling expression, 10.5cm high, weight 1041g and 933g

£300 - 400

118

A BRONZE TRIPOD INCENSE BURNER FOR THE ISLAMIC MARKET

Of bombé form with twin loop handles and raised on three plain supports, unknown four character mark, 10.5cm high, 14cm diameter, weight, 2067g

£400 - 600

119

AN UNUSUAL OVAL SECTION INCENSE BURNER

Six character Qianlong mark but later With twin upright handles and engraved designs of lotus and raised on four cabriole supports, 11cm high, 22cm wide, weight 1155g

£300 - 500

120

A BRONZE SHOULAO GROTTO

17th century

Cast with the central Daoist God of Longevity seated under a large overhanging rock face, clad in long robes and holding a peach and staff, flanked with a small stag and a crane, the reverse with a cast inscription in low relief 'Made by Tang Yanghui', mounted on a later metal plinth, the bronze 40cm high

£800 - 1,200



120



121

WORKS OF ART

121 A CARVED ROOTWOOD FIGURE OF SHOULAO

Late Qing Dynasty
The gnarled root wood section carved into a dynamic figure of the Daoist Immortal Shoulao with a recognizable bulbous forehead, the undulating, striated burls cleverly forming his long beard and hair, the top root appendages forming his arms holding a large peach tree branch, 40cm high

£800 - 1,000

122 A HUANGHUALI SERVICE TRAY

Of rectangular form and with applied moulded edge, 37.5cm wide, 59.5cm long

£250 - 350

123 A PAIR OF LARGE CARVED HARDWOOD IMMORTALS

19th century
Each standing and modelled with their attributes, Shoulao with his gnarled staff, peach, deer and crane, and standing on a rocky base, 65cm high, Li Tiegua cradles a bird in one hand, his lame leg resting on his crutch, on a stylised wave base, 68cm high

£1,000 - 1,500

124 A LAC-BURGAUTÉ DRAWER SET

19th century
The upwards sliding frame allowing access to three stacked drawers, the fronts inlaid with scenes of figures in gardens in abalone shell worked down to selected bright colours, 18cm x 14cm x 14cm

£300 - 500

125 A CANTON ENAMEL INCENSE BURNER

19th century
Of bell-topped and pierced globular form with geometric handles and raised on tripod supports, enamelled with roundels of phoenix and ducks reserved against a design of prunus blossom and bamboo leaves on a blue and gilt lattice ground, the legs enamelled with dragon heads, (damages), 38cm high

£400 - 600

126 A DEEPLY CARVED BAMBOO BRUSHPOT

19th century
Carved all over with sages in a mountain retreat surrounded by pine trees, with bamboo above and behind the towering rocks, 15.5cm high

£500 - 800



123



126

127

A BURLWOOD TOPPED HUANGHUALI BOX SET

The hinged top inset with a burlwood panel within moulded edge opening to reveal two further smaller boxes with lift off covers inset with green hardstone plaques carved with flowers, brass handles and fittings,
10.5cm high, 22.5cm wide, 16.5cm deep

£500 - 700

128

A DRAGON ROBE FRAGMENT

Showing a section of the front of a court robe depicting five clawed dragons amidst clouds on a faded coral ground above waves,
63cm x 74cm and framed and glazed

£300 - 500

129

A ROOTWOOD CARVING OF A SHISHI, A PAIR OF CARVED WOOD DEER AND A CARVED BAMBOO WALKING CANE

The dog modelled recumbent with one paw raised upon a ball, natural knots and grain within the wood used to portray the dog's coat, *16cm high*, the deer modelled standing, a sprig of lingzhi fungus held in its mouth, eyes inlaid, (horns now lacking), *19cm high*, the cane intricately carved to each natural segment with architecture and mountainous landscape,
99cm long

£300 - 500

130

AN APPLIED HARDSTONE CIRCULAR PANEL AND A CANTON TEAPOT

19th/20th century

The panel decorated with tree shrews on a fruiting vine, details in agate, amethyst, and carnelian on a pale green ground, raised on a carved and pierced wooden stand, *panel 15cm diameter, total height 27.5cm*, together with a Canton famille rose pear-shaped teapot and cover, enamelled with scenes of ladies reserved on a ground of scrolling lotus,
16cm high

£300 - 500



127



130



131

131
A PAIR OF GILT AND CLOISONNÉ BALUSTER VASES

20th century
 Each decorated with two panels of song birds among flowering peony reserved on a ground of scrolling lotus, with further formal bands of floral motifs to neck, shoulder and foot,
51cm high, and with wooden stands

£600 - 800

132
A CARVED HARDWOOD FIGURE GROUP

Circa 1900
 Depicting a bearded sage holding a branch of fruiting peach, a young boy at his side bears a smaller branch, a monkey at his feet imploring the figure to spare some fruits,
41cm high

£150 - 200

133
AN UNUSUAL CLOISONNÉ ENAMEL TWO-PART SPITTOON

19th century
 The globular bottom section enamelled with a dense floral meander between ruyi-head border and lappet band, the separate flaring vessel forming the neck finely decorated with stiff leaf lappets and lotus head motifs,
10.2cm high

£800 - 1,000



133

134
AN EXPORT SILVER BOWL

By Wang Hing & Co, Hong Kong, late 19th/early 20th century
 The sides pierced with a design of three dragons chasing the flaming pearl amidst heavenly clouds, raised on a straight foot and bearing stamped '90 WH' mark,
11cm diameter, weight 6.17oz

£500 - 600

135 Y Φ
A CARVED IVORY PUZZLE BALL ON STAND TOGETHER WITH AN IVORY GEISHA

Late 19th century
 The stand turned and carved as a woman holding a flower basket, inscribed 'To Dr Rose from Jonathan Pang', the exterior of the ball carved with dragons, *stand 32cm high, ball 9cm diameter*, together with a Japanese ivory okimono of a lady wearing a kimono, she holds a lotus flower and scissors, signed Tamahisa,
17cm high

£300 - 500



136

136 Y Φ

AN IVORY WRIST REST

19th century

The curving section deeply carved with crayfish, crabs and frogs among lotus stems and leaves, *23cm long*

£800 - 1,200

137 Y Φ

A COLLECTION OF EXPORT IVORY

19th century

Comprising a cylindrical box with figural scenes, *8.7cm diameter*, another similar miniature example, *4cm diameter*, another with reticulated sides carved with a pair of coiling dragons, the cover with lion dog finial, *11cm high*, a carved needle case, *16cm long*, a small carved desk seal, *6.5cm high*, a concentric ball on figural stand, *23.5cm high*, two concentric balls lacking stands, a clothes brush with dragon carved back and two strings of beads

£400 - 600



138

138

A SILK EMBROIDERED BLUE-GROUND DRAGON COURT ROBE

19th century

The nine dragons, worked in couched gold thread, amidst clouds and bats interspersed with auspicious symbols and above rocks and waves and striped hem, all on a rich blue silk ground, the collar and cuffs embroidered with further dragons on a black silk ground, *130cm long*

£800 - 1,200

139

A DARK BLUE SILK ROBE

19th century

Embroidered with butterflies among brightly coloured sprays of peony and chrysanthemum, further embroidered floral bands in blue tones at hems and figures at leisure in gardens on cuffs, with mid-blue silk lining, *96cm long*

£250 - 350



140

BLUE & WHITE CERAMICS

140 A BLUE AND WHITE 'THREE FRIENDS OF WINTER' BOWL

Bearing Yongzheng six-character mark
The exterior painted with prunus, pine and bamboo, a stylised cloud roundel to centre of interior,
13cm diameter

£800 - 1,200

141 A BLUE AND WHITE VASE

19th century
Of baluster form, the straight neck decorated with upright leaves, the body with travellers in a landscape, (drilled for electricity),
porcelain 38cm high

£250 - 350

142 A LARGE BLUE AND WHITE BOTTLE VASE AND AN IMARI CHARGER

The vase circa 1900 painted with a pair of song birds perched on a flowering peony issuing from rocks, with band of flowers on diaper at neck and waves at foot, *45cm high*, together with an eighteenth century Imari charger decorated to the centre with radiating flowers, the rim with waves and rocks, *39.5cm diameter*

£300 - 500

143 A SMALL BLUE AND WHITE BRUSH POT

By Lu Lujun (b.1942)
Finely painted with a continuous landscape of trees along a river bank below a seal and inscription, further poetic inscription on base, *9.5cm high*, and with fitted box

£800 - 1,200

Similar works by this artist were sold at Bonhams Knightsbridge, 4 November 2013.



143



144

144

A BLUE AND WHITE BOTTLE VASE

Kangxi
The neck painted with opposing floral motifs, the shoulder and body with two registers of alternating stylised flowers spaced by bracket bands, old label to base,
25cm high

£500 - 700

145 A KRAAK PORCELAIN LARGE SAUCER DISH

17th century
The deeply sloping dish painted with a central scene of a phoenix and foliage within radiating foliate panels, (rim fritting),
36.5cm diameter

£500 - 700

146

A KRAAK PORCELAIN BOTTLE VASE

17th century
Decorated in vertical panels with flowers,
23cm high

£400 - 600

147

A PAIR OF BLUE AND WHITE JARS WITH COVER AND A VASE

Circa 1900
A pair of ovoid jars painted with two registers of alternating panels of antiques and flowering plants, further floral scene to domed cover, *25.5cm high*, together with a blue and white rouleau vase decorated with two dragons chasing the flaming pearl among heavenly clouds and above waves, bearing four-character Qianlong mark,
25.5cm high

£500 - 700

148

A BLUE AND WHITE CADOGAN TEAPOT

Bearing Shunzhi six-character mark but 20th century

Painted to each side with a landscape of a pagoda in a walled city in the mountains, applied brass ring to foot, 25cm long

£300 - 500

149

A PAIR OF BLUE AND WHITE FLATTENED BOTTLE VASES

Qianlong

Each with moulded panels of landscapes of riverside villages in the mountains, spaced by floral sprays and reserved on a dimpled ground, with traces of gilt enamel, 29.5cm high

£800 - 1,200

150

A CHINESE STYLE BLUE AND WHITE LARGE SAUCER DISH

Kubachi, early 17th century

The interior sides decorated in panels around a central circular motif of a pair of dragons, (repairs),

38.5cm diameter

£800 - 1,200

151

A PAIR OF BLUE AND WHITE PLATES

18th century

Each painted to the centre with a domestic scene of an official, his lady and three sons at leisure on the terrace, the rim painted with vignettes of ladies in a garden reading, painting and picking flowers, a roundel of peonies to base, (one with glued breaks), 25.8cm diameter

£250 - 350

152

A BLUE AND WHITE OVOID VASE

Painted in the Ming style, with scrolling lotus to body, bands of ruyi-clouds to shoulder and lappets at foot,

18cm high

£300 - 500

153

A BLUE AND RED UNDERGLAZE VASE

Bearing Qianlong seal mark but 20th century

Of stepped cylindrical form, painted with peach, pomegranate and citron trees between stiff-leaf and scrolling bands, 25cm high

£400 - 600

154

TWO CHARGERS, A LARGE SAUCER DISH AND AN IMARI POT AND COVER

18th century

The largest charger decorated in blue and white with architecture in landscape, (old stapled repair to stress crack), 55.5cm diameter, an Imari design example, (old stapled repair), 39cm diameter, a blue and white lotus pattern saucer dish, (old stapled repairs), 34cm diameter and an Imari pattern bowl and cover, (old stapled repairs and later metal mounts to cover), 18cm high

£800 - 1,200



146



149



150



155



ENAMELLED CERAMICS

155

A PAIR OF 'DOUBLE PEACOCK' LARGE DISHES

18th century

Each enamelled to the centre with a pair of peacocks among peonies issuing from rockwork within a spearhead border, the rim decorated *bianco sopra bianco* with prunus, chrysanthemum and bamboo below a coloured diaper band spaced with floral motifs, (hairlines), *32.4cm diameter*

£400 - 600

Bearing old retailer's labels for Walter Beaton, Antique Dealer, 37 Albert Sq, Dundee.

156

A FAMILLE ROSE BOWL

Bearing Qianlong seal mark but 19th century

The exterior enamelled with a song bird perched on a bamboo stem among flowering peony, *12.5cm diameter*

£250 - 350

Provenance: From the collection formed by Sir Claud Severn, whilst Colonial Secretary in Hong Kong, circa 1900-1910. Thence by descent.

157

AN EN GRISAILLE TEAPOT WITH EUROPEAN FIGURES

18th century

The teapot of globular form and decorated with two roundels depicting a gentleman gazing at his sleeping lover, below a spearhead band at rim, the cover with floral sprays within a spearhead border, in grey, gilt and red enamels, *18cm long*

£250 - 350



159

158

A FAMILLE VERTE VASE AND COVER

19th century

Of baluster form with domed cover bearing lotus finial, enamelled with lion-dogs at play between diaper bands with flower roundels, (glued break at neck),

47cm high

£250 - 350

159

A LARGE FAMILLE ROSE FIGURE OF AN IMMORTAL

Late 19th/early 20th century

The buddhist monk modelled with bulging eyes and grimacing expression, he holds a small lion-dog as he stands in ornately decorated robes, raised on a rectangular plinth,

47cm high

£600 - 1,000

160

A PAIR OF LARGE CANTON FAMILLE ROSE VASES

19th century

Each of baluster form with moulded lion-dog handles and chilong dragons at shoulder, decorated with panels of courtiers and warriors reserved on a floral ground, with lappet bands at foot (extensive restored breaks),

60cm high

£300 - 500

161

A LARGE FAMILLE VERTE BRUSHPOT

Bearing six-character Kangxi mark but 20th century

The slightly waisted sides enamelled with a continuous scene of ladies and children in a garden, one boy plays with a crab,

16cm high, 19cm diameter

£400 - 600

162

AN IRON-RED AND GILT WATER POT

Tongzhi six-character mark

Of beehive form with flaring mouth, enamelled with two dragons chasing flaming pearls over waves,

7.7cm high

£800 - 1,200

163

A WUCAI DECORATED BOWL

17th century

The exterior enamelled a band of scrolling lotus, (single hairline crack),

14.6cm diameter, 7cm high

£300 - 500

164

TWO FAMILLE ROSE TEAPOTS

Mid 18th century

The first with moulded and enamelled floral sprays, the cover finial formed by a flower stem, a gilt metal mount on spout, 12cm high the second ribbed below waist and with moulded and pieced cartouches surrounded by flowers, (the matched cover lacking finial),

12.5cm high

£300 - 500



162



163



164



165



169

165
A GARNITURE OF FOUR FAMILLE VERTE AND UNDERGLAZE BLUE VASES

Kangxi
 Each of square-section baluster form with recessed corners, two with flaring necks, all painted with panels of peony and chrysanthemum spaced by blue bands of flowers, details in red, green, and yellow enamel, (one with restored neck), 16.5cm and 24cm high

£2,000 - 3,000

166

A FAMILLE ROSE RICE BOWL AND COVER AND ANOTHER

The first of ogee form with cover, each enamelled in lozenge shaped panels with dragon and phoenix spaced by similar panels of precious objects, all on a powder blue ground with gilt foliate designs, bowl interior with dragon clutching the flaming pearl in copper red and gilt, marked with a crouching boy mark, (hairline to cover), 16cm diameter the second with cover and stand enamelled with repeat designs and with rice inclusions, stand 11.2cm diameter

£500 - 700

167

A COLLECTION OF MARKED FAMILLE ROSE PORCELAIN

Bearing various marks, 19th century and later
 A bowl and cover decorated with butterflies, Tongxi seal mark, 12.5cm diameter, a pair of bowls enamelled with scholars, Guangxu seal marks, 11.5cm diameter, a pair of coral ground bowls with reserved bamboo design, Guangxu six-character marks, 12cm diameter, a pair of bowls decorated with peaches, bats and shou characters in iron red, seal marks, 10.6cm diameter, a wucaï dragon and phoenix bowl, Kangxi six-character mark, 13cm diameter, a foliate rimmed bowl enamelled with the Horses of Mu, Jaiqing six-character mark, 11.2cm diameter, a bowl depicting a lady at a window and line of calligraphy, guan yao nei zao [made inside the official kiln] mark, 11.7cm diameter, a famille verte bowl with narrative figural scene, Yongzheng six-character mark, 9.3cm diameter, a pair of cups enamelled with lotus pods and poetry over a celadon glaze, six-character marks, 6.4cm diameter, a cup with scrolling lotus on blue, four-character mark, 6cm diameter, a cup with river scene and poetry, four-character zhen pin mark, 4.8cm diameter, two miniature vases with Qianlong marks, a miniature teapot with seal mark, an unmarked Canton bowl, a Mandarin pattern saucer, a pair of floral cups and three miniature ceramic horses. largest bowl 12.5cm diameter (26).

£500 - 700

Provenance: From the collection formed by Sir Claud Severn, whilst Colonial Secretary in Hong Kong, circa 1900-1910. Thence by descent.



168



168
THREE FAMILLE ROSE SAUCER DISHES DEPICTING SHRINES

Late 19th/early 20th century
Each depicting elegant architecture within an enclosure on a lake, below a long inscription and seals, each with individual four-character mark in red enamel on base, 17cm diameter

£800 - 1,200

169
A PAIR FAMILLE ROSE SAUCER DISHES AND A PAIR OF 'MANDARIN PATTERN' VASES

The dishes bearing four-character hall marks, Daoguang
The dishes each enamelled with a detailed scene of boys at play with kites, lanterns and a fish bowl, *zhong de tang zhi* [Hall for Cultivating Virtue] mark, (one with restored crack), 15.3cm diameter, together with a pair of famille rose and underglaze blue baluster vases, decorated with two figural panels reserved on a red patterned ground, Qianlong, (lamped and with wooden bases), total height 34cm

£800 - 1,200

For mark see Davison, no. 1091, p. 95.

170
AN ENAMELLED SAUCER DISH

Bearing a Jiaqing seal mark
Decorated in underglaze blue and overglaze enamels with a tree peony issuing from rockwork to the well within a border of bamboo, prunus and iris, 15.3cm diameter

£1,000 - 1,500

171
A FAMILLE ROSE SAUCER DISH

Bearing a six-character Daoguang mark variation in red
Enamelled to the well with five bats and lotus with floral and turquoise ground band at rim, similarly decorated to the exterior, 15.5cm diameter

£1,000 - 1,500

172
A FAMILLE ROSE PLATE

Bearing a Jiaqing seal mark but later
Decorated to the centre with a large vase issuing flowers and precious objects, 26.5cm diameter

£1,000 - 1,500



170



171



172



173

MONOCHROME CERAMICS

173

A WHITE GLAZED VASE

18th century

Of meiping form with tapering body rising from a recessed base to a rounded shoulder with short broad waisted neck and applied pair of lion mask handles, all in an ivory-white glaze, *36cm high*

£2,000 - 3,000

Provenance: Property of the Maxwell Macdonald family, removed from Pollok House, Glasgow

174

A LONGQUAN CELADON DISH

Ming

The slightly domed centre carved with a peony within a lobed cavetto and barbed rim, *31.5cm diameter*

£600 - 900

175

A CRACKLE-GLAZED AND LACQUERED VASE

19th century

Of bottle form covered in a thick celadon-coloured glaze with darkened network of crackle, possibly later decorated with design of a song bird on a fruiting vine, *39cm high*

£200 - 400



178

176

FIVE MONOCHROME CERAMICS

Various dates

Comprising; a sang-de-boeuf bottle vase, 18th/19th century (neck cut down), *29.5cm high*, a Longquan celadon vase with lotus carved decoration, (damages), *17cm high*, a Longquan celadon incense burner with combed decoration, (imperfect), *10cm high*, a later celadon vase with lotus decoration, (cracks at neck), *29.5cm high*, together with a white glazed bottle vase with band of key pattern decoration to the neck, (crack at neck), *31.5cm high*

£300 - 500

177

A LONGQUAN CELADON LARGE SAUCER DISH

Ming

The flat rim with foliate form edge above a lobed cavetto and central basket weave design to the centre of the well, (fine hairline crack), *36.5cm diameter*

£600 - 800

178

TWO BLANC-DE-CHINE INCENSE BURNERS

17th/18th century

The larger of cylindrical form and decorated to the exterior with a band of the eight trigrams above another featuring archaistic dragons on a key pattern ground, all raised on three scroll carved bracket feet, *11.5cm diameter, 7cm high* together with another smaller bombé shaped example with twin lion mask handles raised on a circular foot, *9.5cm wide, 4.3cm high*

£600 - 800



179

179

A LONGQUAN CELADON LARGE SAUCER DISH

Ming

The flat rim with foliate form edge above a cavetto with wave and lotus designs around a central design of a temple above waves, (hairline crack and associated rim chip),

41cm diameter

£600 - 800

180

A PAIR OF CELADON JARS

Yongzheng painted marks and impressed CHINA, post 1893

Each with carved ruyi head border over birds in scrolling foliage, (covers lacking, converted to lamps),

porcelain height 20cm

£1,000 - 1,500

181

A GILT AND POWDER BLUE VASE AND A PAIR OF LATER EXAMPLES

An 18th century baluster vase decorated with traces of gilt floral spray and butterflies on dark blue ground, *18.5cm high, and with wooden cover, together with a pair of later ovoid vases with trumpet necks and bright blue exteriors,*

each 20.5cm high

£250 - 350



183

182

A CRACKLE GLAZED WHITE WARE VASE, YUHUCHUNPING

Probably 19th century

The elegantly potted pear-shaped vase with low foot and flared mouth, covered with a finely cackled ivory coloured glaze, the foot slightly ground,

23.5cm high

£300 - 400

183

A CAFÉ-AU-LAIT MALLET VASE

Bearing Kangxi six-character mark

Of yaoling zun [hand bell vase] form covered with an even brown glaze which thins to ochre at the mouth and stepped shoulder,

23.5cm high

£500 - 800

184

A BLACK-BURNISHED EARTHENWARE STEM CUP

Neolithic period, Longshan culture

Thinly potted as a flaring bowl raised on a hollow and pierced stem above a shallow domed base (restored break),

15.5cm high

£300 - 500

Compare a similar stem cup sold at Bonhams New Bond St, London, 11 November 2010, lot 392.

Provenance: The collection of the late Professor G.R. Coope.



185



185 (detail)

PAINTINGS

185
LIAO FUZHI
 19th century

A horizontal scroll in watercolour on silk, naturalistically depicting a wide variety of birds including phoenix, peacocks, mandarin ducks, magpies, cranes, a parrot and an owl, all flying or perched among trees beside a river, signed with inscription and seals, *image 41cm x 181cm*

£300 - 500

Provenance: From the collection formed by Sir Claud Severn, whilst Colonial Secretary in Hong Kong, circa 1900-1910. Thence by descent.

186

A PAINTED BANNER SECTION

On a yellow ground, a pair of dragons face a leaping carp within a central ceremonial gate, between a band of stylised shou characters and waves filled with fish and crabs, in bright colours and metallic paint on paper, *image 124cm x 30cm, and framed and glazed*

£200 - 300

187

A THANGKA OF RED HAYAGRIVA

Tibetan, 18/19th century
 The King of the Wrathful depicted with a crown of skulls atop his three-faced head, holding his attributes in his six arms and stamping upon bundles of snakes with his eight legs, surrounded by flames on a lotus dais, with three smaller monks above, *image 48cm x 32cm, and framed and glazed*

£300 - 500

188

FIVE EXPORT PITH PAINTINGS

19th century
 Each painted in colours with tradesmen and craftsmen at their professions, *24cm x 17cm, and framed and glazed*

£250 - 350



189



194



195

FURNITURE

189

A HUANGHUALI TABLE ON REMOVABLE LEGS

Late Qing

The rectangular top with inset wood panel and a beaded edge raised on an x-form support carved with flowering prunus, 70cm high, 93cm wide, 81cm deep

£1,000 - 1,500

190

A HARDWOOD LOW TABLE

20th century

The plain rectangular top with inset wood panel over a splayed apron and raised on cabriole supports with hoof feet, 41cm high, 155cm wide, 55cm deep

£300 - 500

191

A HARDWOOD PLANT PEDESTAL

19th century

The rectangular top with inset marble panel over a border of scrolling lotus and an apron carved and pierced with eternal knot design on supports joined by an undertier and on ball and claw feet, 51cm high, 40cm wide, 29.5cm deep

£200 - 350

192

A HARDWOOD TABLE ON REMOVABLE LEGS

19th century

The rectangular tray top with carved and pierced prunus gallery and above a similarly carved and pierced apron, and with an engraved prunus detail to one corner of the surface, (copper plates to strengthen corners added), all raised on an x-form support formed as gnarled prunus branches, 62cm high, 74cm wide, 52cm high

£400 - 600

193

A HARDWOOD SIDE TABLE

19th century

The rounded rectangular top with inset wood panel above a waist with applied burlwood details and apron with relief carved shou character and scroll work, raised on supports with split level undertiers and joined by hump backed stretchers,

75.5 high, 55.5 wide, 35cm deep

£500 - 700

194

A HUANGHUALI SQUARE LOW TABLE

Late Qing

The top with inset wood panel over a shaped apron with moulded edge on squat square form supports with scroll feet, 75cm square, 31.5cm high

£1,200 - 1,800

195

A PAIR OF HUANGHUALI INCENSE BURNER STANDS EACH WITH DRAWER

Mid Qing

The square top with inset wood panel above a shaped apron, one side fitted with a single deep drawer for incense, raised on reeded supports with hoof feet, 38cm square, 76.5cm high

£2,000 - 3,000



198



201



199

199

A PAIR OF MOTHER-OF PEARL INLAID HARDWOOD ARMCHAIRS

20th century

The stepped top rail over a central splat carved and pierced with dragon and phoenix flanked by key-pattern above a solid seat and apron carved with prunus, all raised on heavy square-form supports on mask feet,

each 79cm high, 65.5cm wide, 85cm deep

£400 - 600

En suite to the previous lot.

200

A PAIR OF MOTHER-OF-PEARL INLAID HARDWOOD SIDE TABLES

20th century

Each with square top with inset panel and moulded edge above an apron carved in relief with prunus and raised on square-form supports with mask feet,

51cm high, 55.5cm wide, 55.5cm deep

£300 - 500

En suite to the previous lot.

201

A MOTHER-OF-PEARL INLAID HARDWOOD SETTEE

20th century

The stepped top-rail above three back splats inlaid with phoenix and dragon motifs spaced by open key pattern designs, the inset seat panel over fish-belly apron inlaid with flowering prunus and raised on square form supports on mask feet,

80cm high, 188cm wide, 58cm deep

£600 - 800

En suite to the previous lot.

196

A HUANGHUALI INCENSE BURNER STAND

Late Qing

the rectangular top with inset wood panel above a scroll carved apron and raised on square form supports with moulded edges joined by an undertier and ending in scroll carved hoof feet,

79cm high, 41cm wide, 30cm deep

£300 - 500

197

A HUANGHUALI LOW TABLE WITH DRAWERS

Qing

Possibly the base for a merchant's set of scales, the rectangular top with inset wood panel above a set of four deep drawers and a shaped apron, raised on square form supports with moulded edges and on scroll feet,

33cm high, 91.5cm wide, 32.5cm deep

£600 - 800

198

A VERY LARGE MOTHER-OF-PEARL INLAID HARDWOOD LOW TABLE

20th century

The rectangular top with inset central panel inlaid with central tied bouquet of peony, prunus and other flowers within sprigs of bamboo, peony, lotus and other flowering branches to the border and splayed apron, all raised on heavy squat cabriole supports with ball and claw feet,

35.5cm high, 150cm wide, 85cm deep

£800 - 1,200



202

202

AN X-FORM WINDOW SEAT

19th century

The upturned arm rests carved in relief with flowering prunus terminating in carved rose head motifs, the railed seat on supports with further prunus carved detailing,
63cm high, 71cm wide, 38cm deep

£800 - 1,200



203

203

A HUANGHUALI AND DREAMSTONE LOW TABLE

Early 19th century

The rectangular top with a large central dream-stone marble and two similar flanking panels within brass stringing and borders inlaid with foliate designs in mother-of-pearl above a reeded apron with three deep drawers to one side, all raised on twin inverted lyre-form supports ending in scroll feet, joined by a triple interlaced cash symbol undertier,
53.5cm high, 110cm wide, 54cm deep

£3,000 - 4,000



204

204

A HUANGHUALI LOW TABLE

Qing

The rectangular top with inset panel and moulded edge above a splayed apron with central floral motif above scroll moulded edging all raised on squat cabriole supports ending in ball and claw feet,
27.5cm high, 77cm wide, 41.5cm deep

£2,000 - 3,000

205

A TIELIMU LOW TABLE

Ming

The rectangular top with inset wood panel above rounded fish-belly apron with moulded edge on squat square-form cabriole supports ending in plain hoof feet,
24cm high, 75cm wide, 40cm deep

£1,500 - 2,000



205



206



208

206

A PAIR OF JICHIMU SIDE CHAIRS

Qing

The shaped top rail with acanthus-like carved detailing above a carved and pierced back-splat featuring ruyi sceptres flanking a central vase with flowering peony above an inset solid seat panel above a carved and pierced front apron of scrollwork on square-form supports with scroll feet and joined by stretchers, 90.5cm high, 52cm wide, 42cm deep

£800 - 1,200

207

A JICHIMU LOW TABLE

18th century

The rectangular top with inset panel above stepped apron with carved key-pattern scroll design and moulded edge and with geometric scroll corbel brackets to the rounded square-form dog-legged supports terminating in carved ruyi details to feet, 31cm high, 83cm wide, 43.5cm deep

£1,000 - 1,500

208

A LOW SQUARE HUANGHUALI AND HARDWOOD TABLE

Mid Qing

The top with conjoined inset wood panel above a reeded apron with carved and pierced border of scrolls flanking central peaches motif all raised on square-form reeded supports, 46cm high, 77cm wide, 77cm deep

£800 - 1,200



210



211

209

A NEST OF FOUR JICHIMU AND HUANGHUALI TABLES

Late Qing

The rectangular tops with inset rebated panel above carved and pierced key-pattern scroll apron raised on slender square-form supports with moulded edges and hoof feet, joined by humpback stretchers, largest 60.5cm high, 47cm wide, 33.5cm deep

£500 - 800

210

A DOUBLE-SIDED HARDSTONE TABLE SCREEN

19th century

The ornately carved rectangular frame featuring scrolling lotus between corner stylised key pattern designs, one side of the pale green hardstone panel applied in mother of pearl, coral, stained ivory, soapstone and turquoise with two pairs of red crested cranes on rockwork by a fruiting peach tree, the reverse a poetic inscription, all raised on a finely carved stand featuring bats and lotus flowers, 58.5cm high, 40cm wide, 22cm deep

£3,000 - 5,000

The poetry translates approximately as follows:

"Feel the fresh air and breath in the dew,
Enjoy the beauty of nature dance in the air."



215



212

211

A HUANGHUALI LOW TABLE

19th century

The rectangular top inset with wood panel over a splayed apron with moulded edge raised on squat cabriole supports ending in ball and claw feet,

26.5cm high, 76cm wide, 43cm deep

£1,500 - 2,000

212

A PAIR OF HARDWOOD FOLDING HORSESHOE BACKED CHAIRS

Late Qing

The curving top rail above a posture shaped back-splat carved and pierced with a chilong dragon panel above a rectangular panel with a qilin on rock-work below clouds, string seat, seat front further carved with a pair of chilong dragons, all raised on plinth supports, brass mounts throughout,

104cm high, 71cm wide, 60cm wide

£3,000 - 5,000

213

A HUANGHUALI NEST OF TABLES

Circa 1900

The rectangular tops inset with wood panel over a 'fish-belly' shaped apron with moulded edges raised on square form supports joined by humpback stretchers on hoof feet,

63cm high, 46cm wide, 33cm deep

£2,000 - 3,000

214

A HONGMU TRIPOD TABLE

19th century

The circular top inset with rouge marble panel over an apron carved and pierced with prunus design on 'birdcage' support and pedestal carved in relief with qilin on rockwork below trees, all raised on tripod supports with ball and claw feet,

55cm diameter, 74cm high

£500 - 700

215 Y Φ

AN EXPORT SILK, PAINTED PAPER AND IVORY MOUNTED FIRE SCREEN

Late 19th century

The rectangular panel with central three dimensional scene of silk dressed courtiers in a palace setting on a diaper ground set with foliate roundels, in an original British ebonised and gilt decorated Aesthetic period frame with shell and scroll carved crest and raised on side supports with scroll feet,

118cm high, 72cm wide, 44cm deep

£800 - 1,200



213



214



216

216

A HUANGHUALI SCROLL TABLE

Qing

The rectangular top with inset wood panel on in-curving scroll ends with plain fish-belly panels raised on scroll feet, 30cm high, 102cm wide, 29.5cm deep

£800 - 1,200



218

217

A PORCELAIN MOUNTED STAINED WOOD TABLE SCREEN

20th century

The rectangular porcelain enamelled with a pair of carp amidst reeds within a carved and pierced frame on stand, 72cm high

£300 - 500

218

A HONGMU LOW TABLE, KANG

18th/19th century

The rectangular top with inset panel edge above a plain waist and splayed apron carved with stylised leafy scrolls and flower heads, the whole supported on cabriole legs terminating in paw feet, 28cm high x 76.5cm wide x 41cm deep

£1,000 - 1,500

219 W T

A LARGE SQUARE NANMU TABLE

17th/18th century

The single plank top above a waist and shaped apron carved with openwork rectangular panels, florets and a stylized leafy archaic scroll, the whole supported on inwardly curved legs joined by bracket stretchers and terminating in hoof feet. 43cm high, 93cm wide, 93cm deep

£1,000 - 1,500



219



220

220

A HUANGHUALI LOW TABLE, KANG

The indented inset rectangular top above a carved and pierced frieze of opposing chilong dragons flanking a flaming pearl, open fish belly panels to the in-curving supports terminating in tight scroll panels carved feet, *33cm high, 99cm wide, 45cm deep*

£800 - 1,200

221

A HUANGHUALI AND BURR-WOOD LOW TABLE

Qing

The square top with inset burr-wood panel and above a scroll pierced apron, raised on square form supports with reeded detailing, the feet carved separately,

74cm square, 37.5cm high

£1,500 - 2,000



221

222

A HUANGHUALI AND BURR-WOOD LOW TABLE, KANG

18th/19th century

The top surface with an inset rectangular burr-wood panel enclosed within a huanghuali frame ending on two sides with upright terminals, all above an apron carved with foliate scrolls and raised on legs terminating in hoof-shaped feet,

37.7cm high, 35cm wide, 81.2cm long

£2,000 - 3,000



222

END OF SALE

NOTICE TO BIDDERS

This notice is addressed by *Bonhams* to any person who may be interested in a *Lot*, including *Bidders* and potential *Bidders* (including any eventual *Buyer* of the *Lot*). For ease of reference we refer to such persons as "*Bidders*" or "*you*". Our List of Definitions and Glossary is incorporated into this *Notice to Bidders*. It is at Appendix 3 at the back of the *Catalogue*. Where words and phrases are used in this notice which are in the List of Definitions, they are printed in italics.

IMPORTANT: Additional information applicable to the *Sale* may be set out in the *Catalogue* for the *Sale*, in an insert in the *Catalogue* and/or in a notice displayed at the *Sale* venue and you should read them as well. Announcements affecting the *Sale* may also be given out orally before and during the *Sale* without prior written notice. You should be alert to the possibility of changes and ask in advance of bidding if there have been any.

1. OUR ROLE

In its role as *Auctioneer* of *Lots*, *Bonhams* acts solely for and in the interests of the *Seller*. *Bonhams*' job is to sell the *Lot* at the highest price obtainable at the *Sale* to a *Bidder*. *Bonhams* does not act for *Buyers* or *Bidders* in this role and does not give advice to *Buyers* or *Bidders*. When it or its staff make statements about a *Lot* or, if *Bonhams* provides a *Condition Report* on a *Lot* it is doing that on behalf of the *Seller* of the *Lot*. *Bidders* and *Buyers* who are themselves not expert in the *Lots* are strongly advised to seek and obtain independent advice on the *Lots* and their value before bidding for them. The *Seller* has authorised *Bonhams* to sell the *Lot* as its agent on its behalf and, save where we expressly make it clear to the contrary, *Bonhams* acts only as agent for the *Seller*. Any statement or representation we make in respect of a *Lot* is made on the *Seller's* behalf and, unless *Bonhams* sells a *Lot* as principal, not on our behalf and any *Contract for Sale* is between the *Buyer* and the *Seller* and not with us. If *Bonhams* sells a *Lot* as principal this will either be stated in the *Catalogue* or an announcement to that effect will be made by the *Auctioneer*, or it will be stated in a notice at the *Sale* or an insert in the *Catalogue*.

Bonhams does not owe or undertake or agree to any duty or responsibility to you in contract or tort (whether direct, collateral, express, implied or otherwise). If you successfully buy for a *Lot* and buy it, at that stage *Bonhams* does enter into an agreement with the *Buyer*. The terms of that contract are set out in our *Buyer's Agreement*, which you will find at Appendix 2 at the back of the *Catalogue*. This will govern *Bonhams*' relationship with the *Buyer*.

2. LOTS

Subject to the *Contractual Description* printed in bold letters in the *Entry* about the *Lot* in the *Catalogue* (see paragraph 3 below), *Lots* are sold to the *Buyer* on an "as is" basis, with all faults and imperfections. Illustrations and photographs contained in the *Catalogue* (other than photographs forming part of the *Contractual Description*) or elsewhere of any *Lots* are for identification purposes only. They may not reveal the true condition of the *Lot*. A photograph or illustration may not reflect an accurate reproduction of the colour(s) of the *Lot*. *Lots* are available for inspection prior to the *Sale* and it is for you to satisfy yourself as to each and every aspect of a *Lot*, including its authorship, attribution, condition, provenance, history, background, authenticity, style, period, age, suitability, quality, roadworthiness (if relevant), origin, value and estimated selling price (including the *Hammer Price*). It is your responsibility to examine any *Lot* in which you are interested. It should be remembered that the actual condition of a *Lot* may not be as good as that indicated by its outward appearance. In particular, parts may have been replaced or renewed and *Lots* may not be authentic or of satisfactory quality; the inside of a *Lot* may not be visible and may not be original or may be damaged, as for example where it is covered by upholstery or material. Given the age of many *Lots* they may have been damaged and/or repaired and you should not assume that a *Lot* is in good condition. Electronic or mechanical parts may not operate or may not comply with current statutory requirements. You should not assume that electrical items designed to operate on mains electricity will be suitable for connection to the mains electricity supply and you should obtain a report from a qualified electrician on their status before

doing so. Such items which are unsuitable for connection are sold as items of interest for display purposes only. If you yourself do not have expertise regarding a *Lot*, you should consult someone who does to advise you. We can assist in arranging facilities for you to carry out or have carried out more detailed inspections and tests. Please ask our staff for details.

Any person who damages a *Lot* will be held liable for the loss caused.

3. DESCRIPTIONS OF LOTS AND ESTIMATES

Contractual Description of a Lot

The *Catalogue* contains an *Entry* about each *Lot*. Each *Lot* is sold by its respective *Seller* to the *Buyer* of the *Lot* as corresponding only with that part of the *Entry* which is printed in bold letters and (except for the colour, which may be inaccurately reproduced) with any photograph of the *Lot* in the *Catalogue*. The remainder of the *Entry*, which is not printed in bold letters, represents *Bonhams*' opinion (given on behalf of the *Seller*) about the *Lot* only and is not part of the *Contractual Description* in accordance with which the *Lot* is sold by the *Seller*.

Estimates

In most cases, an *Estimate* is printed beside the *Entry*. *Estimates* are only an expression of *Bonhams*' opinion made on behalf of the *Seller* of the range where *Bonhams* thinks the *Hammer Price* for the *Lot* is likely to fall; it is not an *Estimate* of value. It does not take into account any VAT or *Buyer's Premium* payable. *Lots* can in fact sell for *Hammer Prices* below and above the *Estimate*. Any *Estimate* should not be relied on as an indication of the actual selling price or value of a *Lot*. *Estimates* are in the currency of the *Sale*.

Condition Reports

In respect of most *Lots*, you may ask for a *Condition Report* on its physical condition from *Bonhams*. If you do so, this will be provided by *Bonhams* on behalf of the *Seller* free of charge. *Bonhams* is not entering into a contract with you in respect of the *Condition Report* and accordingly does not assume responsibility to you in respect of it. Nor does the *Seller* owe or agree to owe you as a *Bidder* any obligation or duty in respect of this free report about a *Lot*, which is available for your own inspection or for inspection by an expert instructed by you. However, any written *Description* of the physical condition of the *Lot* contained in a *Condition Report* will form part of the *Contractual Description* of the *Lot* under which it is sold to any *Buyer*.

The Seller's responsibility to you

The *Seller* does not make or agree to make any representation of fact or contractual promise, *Guarantee* or warranty and undertakes no obligation or duty, whether in contract or in tort (other than to the eventual *Buyer* as set out above), in respect of the accuracy or completeness of any statement or representation made by him or on his behalf, which is in any way descriptive of any *Lot* or as to the anticipated or likely selling price of any *Lot*. Other than as set out above, no statement or representation in any way descriptive of a *Lot* or any *Estimate* is incorporated into any *Contract for Sale* between a *Seller* and a *Buyer*.

Bonhams' responsibility to you

You have the opportunity of examining the *Lot* if you want to and the *Contract for Sale* for a *Lot* is with the *Seller* and not with *Bonhams*; *Bonhams* acts as the *Seller's* agent only (unless *Bonhams* sells the *Lot* as principal).

Bonhams undertakes no obligation to you to examine, investigate or carry out any tests, either in sufficient depth or at all, on each *Lot* to establish the accuracy or otherwise of any *Descriptions* or opinions given by *Bonhams*, or by any person on *Bonhams*' behalf, whether in the *Catalogue*, or elsewhere.

You should not suppose that such examinations, investigations or tests have occurred.

Bonhams does not make or agree to make any representation of fact, and undertakes no obligation or duty (whether in contract or tort) in respect of the accuracy or completeness of any statement or representation made by *Bonhams* or on *Bonhams*' behalf which is in any way descriptive of any *Lot*

or as to the anticipated or likely selling price of any *Lot*. No statement or representation by *Bonhams* or on its behalf in any way descriptive of any *Lot* or any *Estimate* is incorporated into our *Buyer's Agreement*.

Alterations

Descriptions and *Estimates* may be amended at *Bonhams*' discretion from time to time by notice given orally or in writing before or during a *Sale*.

THE *LOT* IS AVAILABLE FOR INSPECTION AND YOU MUST FORM YOUR OWN OPINION IN RELATION TO IT. YOU ARE STRONGLY ADVISED TO EXAMINE ANY *LOT* OR HAVE IT EXAMINED ON YOUR BEHALF BEFORE THE *SALE*.

4. CONDUCT OF THE SALE

Our *Sales* are public auctions which persons may attend and you should take the opportunity to do so. We do reserve the right at our sole discretion to refuse admission to our premises or to any *Sale* without stating a reason. We have complete discretion as to whether the *Sale* proceeds, whether any *Lot* is included in the *Sale*, the manner in which the *Sale* is conducted and we may offer *Lots* for *Sale* in any order we choose notwithstanding the numbers given to *Lots* in the *Catalogue*. You should therefore check the date and starting time of the *Sale*, whether there have been any withdrawals or late entries. Remember that withdrawals and late entries may affect the time at which a *Lot* you are interested in is put up for *Sale*. We have complete discretion to refuse any bid, to nominate any bidding increment we consider appropriate, to divide any *Lot*, to combine two or more *Lots*, to withdraw any *Lot* from a *Sale* and, before the *Sale* has been closed, to put up any *Lot* for auction again. Auction speeds can exceed 100 *Lots* to the hour and bidding increments are generally about 10%. However these do vary from *Sale* to *Sale* and from *Auctioneer* to *Auctioneer*. Please check with the department organising the *Sale* for advice on this. Where a *Reserve* has been applied to a *Lot*, the *Auctioneer* may, in his absolute discretion, place bids (up to an amount not equalling or exceeding such *Reserve*) on behalf of the *Seller*. We are not responsible to you in respect of the presence or absence of any *Reserve* in respect of any *Lot*. If there is a *Reserve* it will normally be no higher than the lower figure for any *Estimate* in the *Catalogue*, assuming that the currency of the *Reserve* has not fluctuated adversely against the currency of the *Estimate*. The *Buyer* will be the *Bidder* who makes the highest bid acceptable to the *Auctioneer* for any *Lot* (subject to any applicable *Reserve*) to whom the *Lot* is knocked down by the *Auctioneer* at the fall of the *Auctioneer's* hammer. Any dispute as to the highest acceptable bid will be settled by the *Auctioneer* in his absolute discretion. All bids tendered will relate to the actual *Lot* number announced by the *Auctioneer*. An electronic currency converter may be used at the *Sale*. This equipment is provided as a general guide as to the equivalent amount in certain currencies of a given bid. We do not accept any responsibility for any errors which may occur in the use of the currency converter. We may use video cameras to record the *Sale* and may record telephone calls for reasons of security and to assist in solving any disputes which may arise in relation to bids made at the *Sale*. At some *Sales*, for example, jewellery *Sales*, we may use screens on which images of the *Lots* will be projected. This service is provided to assist viewing at the *Sale*. The image on the screen should be treated as an indication only of the current *Lot*. It should be noted that all bids tendered will relate to the actual *Lot* number announced by the *Auctioneer*. We do not accept any responsibility for any errors which may occur in the use of the screen.

5. BIDDING

We do not accept bids from any person who has not completed and delivered to us one of our *Bidding Forms*, either our *Bidder Registration Form*, *Absentee Bidding Form* or *Telephone Bidding Form*. You will be asked for proof of identity, residence and references, which, when asked for, you must supply if your bids are to be accepted by us. Please bring your passport, driving licence (or similar photographic proof of identity) and proof of address. We may request a deposit from you before allowing you to bid. We may refuse entry to a *Sale* to any person even if that person has completed a *Bidding Form*.

Bidding in person

You should come to our *Bidder* registration desk at the *Sale* venue and fill out a *Bidder* Registration Form on (or, if possible, before) the day of the *Sale*. The bidding number system is sometimes referred to as "paddle bidding". You will be issued with a large card (a "paddle") with a printed number on it. This will be attributed to you for the purposes of the *Sale*. Should you be a successful *Bidder* you will need to ensure that your number can be clearly seen by the *Auctioneer* and that it is your number which is identified as the *Buyer's*. You should not let anyone else use your paddle as all *Lots* will be invoiced to the name and address given on your *Bidder* Registration Form. Once an invoice is issued it will not be changed. If there is any doubt as to the *Hammer Price* of, or whether you are the successful *Bidder* of, a particular *Lot*, you must draw this to the attention of the *Auctioneer* before the next *Lot* is offered for *Sale*. At the end of the *Sale*, or when you have finished bidding please return your paddle to the *Bidder* registration desk.

Bidding by telephone

If you wish to bid at the *Sale* by telephone, please complete a Telephone *Bidding Form*, which is available from our offices or in the *Catalogue*. Please then return it to the office responsible for the *Sale* at least 24 hours in advance of the *Sale*. It is your responsibility to check with our Bids Office that your bid has been received. Telephone calls will be recorded. The telephone bidding facility is a discretionary service and may not be available in relation to all *Lots*. We will not be responsible for bidding on your behalf if you are unavailable at the time of the *Sale* or if the telephone connection is interrupted during bidding. Please contact us for further details.

Bidding by post or fax

Absentee *Bidding Forms* can be found in the back of this *Catalogue* and should be completed and sent to the office responsible for the *Sale*. It is in your interests to return your form as soon as possible, as if two or more *Bidders* submit identical bids for a *Lot*, the first bid received takes preference. In any event, all bids should be received at least 24 hours before the start of the *Sale*. Please check your Absentee *Bidding Form* carefully before returning it to us, fully completed and signed by you. It is your responsibility to check with our Bids Office that your bid has been received. This additional service is complimentary and is confidential. Such bids are made at your own risk and we cannot accept liability for our failure to receive and/or place any such bids. All bids made on your behalf will be made at the lowest level possible subject to *Reserves* and other bids made for the *Lot*. Where appropriate your bids will be rounded down to the nearest amount consistent with the *Auctioneer's* bidding increments. New *Bidders* must also provide proof of identity and address when submitting bids. Failure to do this will result in your bid not being placed.

Bidding via the internet

Please visit our *Website* at <http://www.bonhams.com> for details of how to bid via the internet.

Bidding through an agent

Bids will be accepted as placed on behalf of the person named as the principal on the *Bidding Form* although we may refuse to accept bids from an agent on behalf of a principal and will require written confirmation from the principal confirming the agent's authority to bid. Nevertheless, as the *Bidding Form* explains, any person placing a bid as agent on behalf of another (whether or not he has disclosed that fact or the identity of his principal) will be jointly and severally liable with the principal to the *Seller* and to *Bonhams* under any contract resulting from the acceptance of a bid. Subject to the above, please let us know if you are acting on behalf of another person when bidding for *Lots* at the *Sale*.

Equally, please let us know if you intend to nominate another person to bid on your behalf at the *Sale* unless this is to be carried out by us pursuant to a Telephone or Absentee *Bidding Form* that you have completed. If we do not approve the agency arrangements in writing before the *Sale*, we are entitled to assume that the person bidding at the *Sale* is bidding on his own behalf. Accordingly, the person bidding at the *Sale* will be the *Buyer* and will be liable to pay the *Hammer Price* and *Buyer's Premium* and associated charges. If we approve the identity of your client in advance, we will be in a position to address the invoice to your principal rather than you. We will

require proof of the agent's client's identity and residence in advance of any bids made by the agent on his behalf. Please refer to our *Conditions of Business* and contact our Customer Services Department for further details.

6. CONTRACTS BETWEEN THE BUYER AND SELLER AND THE BUYER AND BONHAMS

On the *Lot* being knocked down to the *Buyer*, a *Contract for Sale* of the *Lot* will be entered into between the *Seller* and the *Buyer* on the terms of the *Contract for Sale* set out in Appendix 1 at the back of the *Catalogue*. You will be liable to pay the *Purchase Price*, which is the *Hammer Price* plus any applicable VAT. At the same time, a separate contract is also entered into between us as *Auctioneers* and the *Buyer*. This is our *Buyer's Agreement*, the terms of which are set out in Appendix 2 at the back of the *Catalogue*. Please read the terms of the *Contract for Sale* and our *Buyer's Agreement* contained in the *Catalogue* in case you are the successful *Bidder*. We may change the terms of either or both of these agreements in advance of their being entered into, by setting out different terms in the *Catalogue* and/or by placing an insert in the *Catalogue* and/or by notices at the *Sale* venue and/or by oral announcements before and during the *Sale*. You should be alert to this possibility of changes and ask if there have been any.

7. BUYER'S PREMIUM AND OTHER CHARGES PAYABLE BY THE BUYER

Under the *Buyer's Agreement*, a premium (the *Buyer's Premium*) is payable to us by the *Buyer* in accordance with the terms of the *Buyer's Agreement* and at rates set out below, calculated by reference to the *Hammer Price* and payable in addition to it. Storage charges and *Expenses* are also payable by the *Buyer* as set out in the *Buyer's Agreement*. All the sums payable to us by the *Buyer* are subject to VAT. For this *Sale* the following rates of *Buyer's Premium* will be payable by *Buyers* on each lot purchased:

25% up to £50,000 of the *Hammer Price*
20% from £50,001 to £1,000,000 of the *Hammer Price*
12% from £1,000,001 of the *Hammer Price*

The *Buyer's premium* is payable for the services to be provided by *Bonhams* in the *Buyer's Agreement* which is contained in the *Catalogue* for this *Sale* and for the opportunity to bid for the *Lot* at the *Sale*.

On certain *Lots*, which will be marked "AR" in the *Catalogue* and which are sold for a *Hammer Price* of €1,000 or greater (converted into the currency of the *Sale* using the European Central Bank Reference rate prevailing on the date of the *Sale*), the *Additional Premium* will be payable to us by the *Buyer* to cover our *Expenses* relating to the payment of royalties under the Artists Resale Right Regulations 2006. The *Additional Premium* will be a percentage of the amount of the *Hammer Price* calculated in accordance with the table below, and shall not exceed €12,500 (converted into the currency of the *Sale* using the European Central Bank Reference rate prevailing on the date of the *Sale*).

<i>Hammer Price</i>	Percentage amount
From €0 to €50,000	4%
From €50,000.01 to €200,000	3%
From €200,000.01 to €350,000	1%
From €350,000.01 to €500,000	0.5%
Exceeding €500,000	0.25%

8. VAT

The prevailing rate of VAT at the time of going to press is 20%, but this is subject to government change and the rate payable will be the rate in force on the date of the *Sale*.

The following symbols are used to denote that VAT is due on the *Hammer Price* and *Buyer's Premium*:

- † VAT at the prevailing rate on *Hammer Price* and *Buyer's Premium*
- Ω VAT on imported items at the prevailing rate on *Hammer Price* and *Buyer's Premium*
- * VAT on imported items at a preferential rate of 5% on *Hammer Price* and the prevailing rate on *Buyer's Premium*

- G Gold bullion exempt from VAT on the *Hammer Price* and subject to VAT at the prevailing rate on the *Buyer's Premium*
- Zero rated for VAT, no VAT will be added to the *Hammer Price* or the *Buyer's Premium*
- α *Buyers* from within the EU: VAT is payable at the prevailing rate on just the *Buyer's Premium* (NOT the *Hammer Price*). *Buyers* from outside the EU: VAT is payable at the prevailing rate on both *Hammer Price* and *Buyer's Premium*. If a *Buyer*, having registered under a non-EU address, decides that the item is not to be exported from the EU, then he should advise *Bonhams* immediately.

In all other instances no VAT will be charged on the *Hammer Price*, but VAT at the prevailing rate will be added to *Buyer's Premium* which will be invoiced on a VAT inclusive basis.

9. PAYMENT

It is of critical importance that you ensure that you have readily available funds to pay the *Purchase Price* and the *Buyer's Premium* (plus VAT and any other charges and *Expenses* to us) in full before making a bid for the *Lot*. If you are a successful *Bidder*, payment will be due to us by 4.30 pm on the second working day after the *Sale* so that all sums are cleared by the eighth working day after the *Sale*. Unless agreed by us in advance payments made by anyone other than the registered *Buyer* will not be accepted. Payment will have to be by one of the following methods (all cheques should be made payable to *Bonhams* 1793 Limited). *Bonhams* reserves the right to vary the terms of payment at any time.

Sterling personal cheque drawn on a UK branch of a bank or building society: all cheques must be cleared before you can collect your purchases;

Cash: you may pay for *Lots* purchased by you at this *Sale* with notes, coins or travellers cheques in the currency in which the *Sale* is conducted (but not any other currency) provided that the total amount payable by you in respect of all *Lots* purchased by you at the *Sale* does not exceed £3,000, or the equivalent in the currency in which the *Sale* is conducted, at the time when payment is made. If the amount payable by you for *Lots* exceeds that sum, the balance must be paid otherwise than in coins, notes or travellers cheques;

Bank transfer: you may electronically transfer funds to our *Trust Account*. If you do so, please quote your paddle number and invoice number as the reference. Our *Trust Account* details are as follows:

Bank: National Westminster Bank Plc
Address: PO Box 4RY
250 Regent Street
London W1A 4RY
Account Name: Bonhams 1793 Limited Trust Account
Account Number: 25563009
Sort Code: 56-00-27
IBAN Number: GB 33 NWBK 560027 25563009

If paying by bank transfer, the amount received after the deduction of any bank fees and/or conversion of the currency of payment to pounds sterling must not be less than the sterling amount payable, as set out on the invoice.

Debit cards: there is no additional charge for purchases made with personal debit cards, issued by a UK bank. Debit cards issued by an overseas bank, deferred and company debit cards and all credit cards will be subject to a 2% surcharge;

Credit cards: Visa and Mastercard only. Please note there is a 2% surcharge on the total invoice value when payments are made using credit cards. It may be advisable to notify your card provider of your intended purchase in advance to reduce delays caused by us having to seek authority when you come to pay. If you have any questions with regard to payment, please contact our Customer Services Department.

China UnionPay (CUP) debit cards: No surcharge for using CUP debit cards will apply on the first £100,000 invoiced to a *Buyer* in any *Sale*; a 2% surcharge will be made on the balance over £100,000.

10. COLLECTION AND STORAGE

The *Buyer* of a *Lot* will not be allowed to collect it until payment in full and in cleared funds has been made (unless we have made a special arrangement with the *Buyer*). For collection and removal of purchased *Lots*, please refer to *Sale* Information at the front of the *Catalogue*. Our offices are open 9.00am – 5pm Monday to Friday. Details relating to the collection of a *Lot*, the storage of a *Lot* and our *Storage Contractor* after the *Sale* are set out in the *Catalogue*.

11. SHIPPING

Please refer all enquiries to our shipping department on:
Tel: +44 (0)20 8963 2850/2852 Fax: +44 (0)20 8963 2805
Email: shipping@bonhams.com

12. EXPORT/TRADE RESTRICTIONS

It is your sole responsibility to comply with all export and import regulations relating to your purchases and also to obtain any relevant export and/or import licence(s). Export licences are issued by Arts Council England and application forms can be obtained from its Export Licensing Unit. The detailed provisions of the export licencing arrangements can be found on the ACE website <http://www.artscouncil.org.uk/what-we-do/supporting-museums-cultural-property/export-controls/export-licensing/> or by phoning ACE on +44 (0)20 7973 5188. The need for import licences varies from country to country and you should acquaint yourself with all relevant local requirements and provisions. The refusal of any import or export licence(s) or any delay in obtaining such licence(s) shall not permit the rescission of any *Sale* nor allow any delay in making full payment for the *Lot*. Generally, please contact our shipping department before the *Sale* if you require assistance in relation to export regulations.

13. CITES REGULATIONS

Please be aware that all *Lots* marked with the symbol Y are subject to CITES regulations when exporting these items outside the EU. These regulations may be found at <http://www.defra.gov.uk/ahvla-en/imports-exports/cites/> or may be requested from:

Animal Health and Veterinary Laboratories Agency (AHVLA)
Wildlife Licencing
Floor 1, Zone 17, Temple Quay House
2 The Square, Temple Quay
BRISTOL BS1 6EB
Tel: +44 (0) 117 372 8774

14. THE SELLERS AND/OR BONHAMS' LIABILITY

Other than any liability of the *Seller* to the *Buyer* of a *Lot* under the *Contract for Sale*, neither we nor the *Seller* are liable (whether in negligence or otherwise) for any error or misdescription or omission in any *Description* of a *Lot* or any *Estimate* in respect of it, whether contained in the *Catalogue* or otherwise, whether given orally or in writing and whether given before or during the *Sale*. Neither we nor the *Seller* will be liable for any loss of *Business*, profits, revenue or income, or for loss of reputation, or for disruption to *Business* or wasted time on the part of management or staff, or for indirect losses or consequential damages of any kind, irrespective in any case of the nature, volume or source of the loss or damage alleged to be suffered, and irrespective of whether the said loss or damage is caused by or claimed in respect of any negligence, other tort, breach of contract (if any) or statutory duty, restitutionary claim or otherwise. In any circumstances where we and/or the *Seller* are liable in relation to any *Lot* or any *Description* or *Estimate* made of any *Lot*, or the conduct of any *Sale* in relation to any *Lot*, whether in damages, for an indemnity or contribution, or for a restitutionary remedy or otherwise, our and/or the *Seller's* liability (combined, if both we and the *Seller* are liable) will be limited to payment of a sum which will not exceed by way of maximum the amount of the *Purchase Price* of the *Lot* irrespective in any case of the nature, volume or source of any loss or damage alleged to be suffered or sum claimed as due, and irrespective of whether the liability arises from any negligence, other tort, breach of contract (if any) or statutory duty or otherwise. Nothing set out above will be construed as excluding or restricting (whether directly or

indirectly) our liability or excluding or restricting any person's rights or remedies in respect of (i) fraud, or (ii) death or personal injury caused by our negligence (or by the negligence of any person under our control or for whom we are legally responsible), or (iii) acts or omissions for which we are liable under the Occupiers Liability Act 1957, or (iv) any other liability to the extent the same may not be excluded or restricted as a matter of law or (v) our undertakings under paragraphs 9 (in relation to specialist *Stamp* or *Book Sales* only) and 10 of the *Buyer's Agreement*. This same applies in respect of the *Seller*, as if references to us in this paragraph were substituted with references to the *Seller*.

15. BOOKS

As stated above, all *Lots* are sold on an "as is" basis, subject to all faults, imperfections and errors of *Description* save as set out below. However, you will be entitled to reject a *Book* in the circumstances set out in paragraph 11 of the *Buyers Agreement*. Please note that *Lots* comprising printed *Books*, unframed maps and bound manuscripts are not liable to VAT on the *Buyer's Premium*.

16. CLOCKS AND WATCHES

All *Lots* are sold "as is", and the absence of any reference to the condition of a clock or watch does not imply that the *Lot* is in good condition and without defects, repairs or restorations. Most clocks and watches have been repaired in the course of their normal lifetime and may now incorporate parts not original to them. Furthermore, *Bonhams* makes no representation or warranty that any clock or watch is in working order. As clocks and watches often contain fine and complex mechanisms, *Bidders* should be aware that a general service, change of battery or further repair work, for which the *Buyer* is solely responsible, may be necessary. *Bidders* should be aware that the importation of watches such as Rolex, Frank Muller and Corum into the United States is highly restricted. These watches may not be shipped to the USA and can only be imported personally.

17. FIREARMS – PROOF, CONDITION AND CERTIFICATION

Proof of Firearms

The term "proof exemption" indicates that a firearm has been examined at a Proof House, but not proved, as either (a) it was deemed of interest and not intended for use, or (b) ammunition was not available. In either case, the firearm must be regarded as unsafe to fire unless subsequently proved. Firearms proved for Black Powder should not be used with smokeless ammunition.

The term "Certificate of Unprovability" indicates that a firearm has been examined at a Proof House and is deemed both unsuitable for proof and use. Reproof is required before any such firearm is to be used.

Guns Sold as Parts

Barrels of guns sold as parts will only be made available for sleeving and measurements once rendered unserviceable according to the Gun Barrel Proof Act of 1968 to 1978 and the Rules of Proof.

Condition of Firearms

Comment in this *Catalogue* is restricted, in general, to exceptional condition and to those defects that might affect the immediate safety of a firearm in normal use. An intending *Bidder* unable to make technical examinations and assessments is recommended to seek advice from a gunmaker or from a modern firearms specialist. All prospective *Bidders* are advised to consult the "of bore and wall-thickness measurements posted in the saleroom and available from the department. *Bidders* should note that guns are stripped only where there is a strong indication of a mechanical malfunction. Stripping is not, otherwise, undertaken. Guns intended for use should be stripped and cleaned beforehand. Hammer guns should have their rebound mechanisms checked before use. The safety mechanisms of all guns must be tested before use. All measurements are approximate.

Original Gun Specifications Derived from Gunmakers

The Sporting Gun Department endeavours to confirm a gun's original specification and date of manufacture with makers who hold their original records.

Licensing Requirements Firearms Act 1968 as amended

Bonhams is constantly reviewing its procedures and would remind you that, in the case of firearms or shotguns subject to certification, to conform with current legislation, *Bonhams* is required to see, as appropriate, your original registered firearms dealer's certificate / shot gun certificate / firearm certificate / museum firearms licence / Section 5 authority or import licence (or details of any exemption from which you may benefit, for instance Crown servant status) for the firearm(s) you have purchased prior to taking full payment of the amount shown on your invoice. Should you not already be in possession of such an authority or exemption, you are required to initially pay a deposit of 95% of the total invoice with the balance of 5% payable on presentation of your valid certificate or licence showing your authority to hold the firearm(s) concerned.

Please be advised that if a successful *Bidder* is then unable to produce the correct paperwork, the *Lot(s)* will be reoffered by *Bonhams* in the next appropriate *Sale*, on standard terms for *Sellers*, and you will be responsible for any loss incurred by *Bonhams* on the original *Sale* to you.

In the case of RFD certificates and Section 5 authorities, we wish to keep an up-to-date copy on file. Please supply us with a Fax or photocopy. It would be helpful if you could send us an updated copy whenever your certificate or authority is renewed or changed.

Lots marked 'S1' and bearing red labels are Section 1 firearms and require a valid British Firearms certificate, RFD Licence or import licence.

Lots marked 'S2' and bearing blue labels are Section 2 firearms and require a valid British Shotgun certificate, RFD licence or import licence.

Lots marked 'S5' and bearing specially marked red labels are Section 5 prohibited firearms and require a valid Section 5 Authority or import licence.

Lots marked with a 'S58' and bearing yellow labels are for obsolete calibres and no licence is required unless ammunition is held.

Unmarked *Lots* require no licence.

Please do not hesitate to contact the Modern Sporting Gun Department should you have any queries.

Taxidermy and Related Items

As a *Seller* of these articles, *Bonhams* undertakes to comply fully with Cites and DEFRA regulations. *Buyers* are advised to inform themselves of all such regulations and should expect the exportation of items to take some time to arrange.

18. FURNITURE

Upholstered Furniture

Whilst we take every care in cataloguing furniture which has been upholstered we offer no *Guarantee* as to the originality of the wood covered by fabric or upholstery.

19. JEWELLERY

≈ Ruby and Jadeite

Ruby and jadeite gemstones of Burmese (Myanmar) origin may not be imported into the US. Rubies and jadeite of non-Burmese origin require certification before import into the US and it is the *Buyer's* responsibility to obtain all relevant and required export/import licences, certificates and documentation before shipping. Failure by the *Buyer* to successfully import goods into the US does not constitute grounds for non payment or cancellation of *Sale*. *Bonhams* will not be responsible for any additional costs in this regard howsoever incurred.

Gemstones

Historically many gemstones have been subjected to a variety of treatments to enhance their appearance. Sapphires and rubies are routinely heat treated to improve their colour and clarity, similarly emeralds are frequently treated with oils or resin for the same purpose. Other treatments such as staining, irradiation or coating may have been used on other gemstones. These treatments may be permanent, whilst others may need special care or re-treatment over the years to retain their appearance. *Bidders* should be aware that *Estimates* assume that gemstones may have been subjected to such treatments. A number of laboratories issue certificates that give more detailed *Descriptions* of gemstones. However there may not be consensus between different laboratories on the degrees, or types of treatment for any particular gemstone. In the event that *Bonhams* has been given or has obtained certificates for any *Lot* in the *Sale* these certificates will be disclosed in the *Catalogue*. Although, as a matter of policy, *Bonhams* endeavours to provide certificates from recognised laboratories for certain gemstones, it is not feasible to obtain certificates for each *Lot*. In the event that no certificate is published in the *Catalogue*, *Bidders* should assume that the gemstones may have been treated. Neither *Bonhams* nor the *Seller* accepts any liability for contradictions or differing certificates obtained by *Buyers* on any *Lots* subsequent to the *Sale*.

Estimated Weights

If a stone(s) weight appears within the body of the *Description* in capital letters, the stone(s) has been unmounted and weighed by *Bonhams*. If the weight of the stone(s) is stated to be approximate and does not appear in capital letters, the stone(s) has been assessed by us within its/their settings, and the stated weight is a statement of our opinion only. This information is given as a guide and *Bidders* should satisfy themselves with regard to this information as to its accuracy.

Signatures

1. A diamond brooch, by Kutchinsky

When the maker's name appears in the title, in *Bonhams'* opinion the piece is by that maker.

2. A diamond brooch, signed Kutchinsky

Has a signature that, in *Bonhams'* opinion, is authentic but may contain gemstones that are not original, or the piece may have been altered.

3. A diamond brooch, mounted by Kutchinsky

Has been created by the jeweller, in *Bonhams'* opinion, but using stones or designs supplied by the client.

20. PHOTOGRAPHS

Explanation of Catalogue Terms

- "Bill Brandt": in our opinion a work by the artist.
- "Attributed to Bill Brandt": in our opinion probably a work by the artist, but less certainty to authorship is expressed than in the preceding category.
- "Signed and/or titled and/or dated and/or inscribed": in our opinion the signature and/or title and/or date and/or inscription are in the artist's hand.
- "Signed and/or titled and/or dated and/or inscribed in another hand": in our opinion the signature and/or title and/or date and/or inscription have been added by another hand.
- The date given is that of the image (negative). Where no further date is given, this indicates that the photographic print is vintage (the term "vintage" may also be included in the *Lot Description*). A vintage photograph is one which was made within approximately 5-10 years of the negative. Where a second, later date appears, this refers to the date of printing. Where the exact printing date is not known, but understood to be later, "printed later" will appear in the *Lot Description*.
- Unless otherwise specified, dimensions given are those of the piece of paper on which the image is printed, including any margins. Some photographs may appear in the *Catalogue* without margins illustrated.
- All photographs are sold unframed unless stated in the *Lot Description*.

21. PICTURES

Explanation of Catalogue Terms

The following terms used in the *Catalogue* have the following meanings but are subject to the general provisions relating to *Descriptions* contained in the *Contract for Sale*:

- "Jacopo Bassano": in our opinion a work by the artist. When the artist's forename(s) is not known, a series of asterisks, followed by the surname of the artist, whether preceded by an initial or not, indicates that in our opinion the work is by the artist named;
- "Attributed to Jacopo Bassano": in our opinion probably a work by the artist but less certainty as to authorship is expressed than in the preceding category;
- "Studio/Workshop of Jacopo Bassano": in our opinion a work by an unknown hand in a studio of the artist which may or may not have been executed under the artist's direction;
- "Circle of Jacopo Bassano": in our opinion a work by a hand closely associated with a named artist but not necessarily his pupil;
- "Follower of Jacopo Bassano": in our opinion a work by a painter working in the artist's style, contemporary or nearly contemporary, but not necessarily his pupil;
- "Manner of Jacopo Bassano": in our opinion a work in the style of the artist and of a later date;
- "After Jacopo Bassano": in our opinion, a copy of a known work of the artist;
- "Signed and/or dated and/or inscribed": in our opinion the signature and/or date and/or inscription are from the hand of the artist;
- "Bears a signature and/or date and/or inscription": in our opinion the signature and/or date and/or inscription have been added by another hand.

22. PORCELAIN AND GLASS

Damage and Restoration

For your guidance, in our *Catalogues* we detail, as far as practicable, recorded all significant defects, cracks and restoration. Such practicable *Descriptions* of damage cannot be definitive, and in providing *Condition Reports*, we cannot *Guarantee* that there are no other defects present which have not been mentioned. *Bidders* should satisfy themselves by inspection, as to the condition of each *Lot*. Please see the *Contract for Sale* printed in this *Catalogue*. Because of the difficulty in determining whether an item of glass has been repolished, in our *Catalogues* reference is only made to visible chips and cracks. No mention is made of repolishing, severe or otherwise.

23. VEHICLES

The Veteran Car Club of Great Britain

Dating Plates and Certificates

When mention is made of a Veteran Car Club Dating Plate or Dating Certificate in this *Catalogue*, it should be borne in mind that the Veteran Car Club of Great Britain using the services of Veteran Car Company Ltd, does from time to time, review cars already dated and, in some instances, where fresh evidence becomes available, the review can result in an alteration of date. Whilst the Club and Veteran Car Company Ltd make every effort to ensure accuracy, the date shown on the Dating Plate or Dating Certificate cannot be guaranteed as correct and intending purchasers should make their own enquiries as to the date of the car.

24. WINE

Lots which are lying under Bond and those liable to VAT may not be available for immediate collection.

Examining the wines

It is occasionally possible to provide a pre-*Sale* tasting for larger parcels (as defined below). This is generally limited to more recent and everyday drinking wines. Please contact the department for details.

It is not our policy to inspect every unopened case. In the case of wines older than 20 years the boxes will usually have been opened and levels and appearance noted in the *Catalogue* where necessary. You should make proper allowance for variations in ullage levels and conditions of corks, capsules and labels.

Corks and Ullages

Ullage refers to the space between the base of the cork and the wine. Ullage levels for Bordeaux shaped bottles are only normally noted when below the neck and for Burgundy, Alsace, German and Cognac shaped bottles when greater than 4 centimetres (cm). Acceptable ullage levels increase with age; generally acceptable levels are as follows:

Under 15 years old – into neck or less than 4cm
15 to 30 years old – top shoulder (ts) or up to 5cm
Over 30 years old – high shoulder (hs) or up to 6cm

It should be noted that ullages may change between publication of the *Catalogue* and the *Sale* and that corks may fail as a result of transporting the wine. We will only accept responsibility for *Descriptions* of condition at the time of publication of the *Catalogue* and cannot accept responsibility for any loss resulting from failure of corks either before or after this point.

Options to buy parcels

A parcel is a number of *Lots* of identical size of the same wine, bottle size and *Description*. The *Buyer* of any of these *Lots* has the option to accept some or all of the remaining *Lots* in the parcel at the same price, although such options will be at the *Auctioneer's* sole discretion. Absentee *Bidders* are, therefore, advised to bid on the first *Lot* in a parcel.

Wines in Bond

Wines lying in Bond are marked Δ and VAT is payable by the purchaser, at the standard rate, on the *Hammer Price*, unless the wines are to remain under Bond. *Buyers* requiring their wine to remain in Bond must notify *Bonhams* at the time of the *Sale*. The *Buyer* is then himself responsible for all duty, clearance VAT and other charges that may be payable thereon. All such *Lots* must be transferred or collected within two weeks of the *Sale*.

Buyers outside the UK must be aware that any forwarding agent appointed to export their purchases must have a movement certificate for *Lots* to be released under Bond.

Bottling Details and Case Terms

The following terms used in the *Catalogue* have the following meanings:

CB – Château bottled
DB – Domaine bottled
EstB – Estate bottled
BB – Bordeaux bottled
BE – Belgian bottled
FB – French bottled
GB – German bottled
OB – Oporto bottled
UK – United Kingdom bottled
owc – original wooden case
iwc – individual wooden case
oc – original carton

SYMBOLS

THE FOLLOWING SYMBOLS ARE USED TO DENOTE

- Y Subject to CITES regulations when exporting these items outside the EU, see clause 13.
- WT Objects displayed with a WT will be located at the Ward Thomas Removals Ltd warehouse and will only be available for collection from this location.
- W Objects displayed with a w will be located in the Bonhams Warehouse and will only be available for collection from this location.
- ≈ Please note that as a result of recent legislation ruby and jadeite gem stones of Burmese (Myanmar) origin may not be imported into the US. Rubies and jadeite of non-Burmese origin require certification before import into the US.
- Δ Wines lying in Bond.
- AR An *Additional Premium* will be payable to us by the *Buyer* to cover our *Expenses* relating to payment of royalties under the Artists Resale Right Regulations 2006. See clause 7 for details.
- The *Seller* has been guaranteed a minimum price for the *Lot*, either by *Bonhams* or a third party. This may take the form of an irrevocable bid by a third party, who may make a financial gain on a successful *Sale* or a financial loss if unsuccessful.
- ▲ *Bonhams* owns the *Lot* either wholly or partially or may otherwise have an economic interest.
- Ⓞ This lot contains or is made of ivory. The United States Government has banned the import of ivory into the USA.

•, †, *, G, Ω, α see clause 8, VAT, for details.

DATA PROTECTION – USE OF YOUR INFORMATION

Where we obtain any personal information about you, we shall only use it in accordance with the terms of our Privacy Policy (subject to any additional specific consent(s) you may have given at the time your information was disclosed). A copy of our Privacy Policy can be found on our Website www.bonhams.com or requested by post from Customer Services Department, 101 New Bond Street, London, W1S 1SR or by email from info@bonhams.com

APPENDIX 1

CONTRACT FOR SALE

IMPORTANT: These terms may be changed in advance of the *Sale* of the *Lot* to you, by the setting out of different terms in the *Catalogue* for the *Sale* and/or by placing an insert in the *Catalogue* and/or by notices at the *Sale* venue and/or by oral announcements before and during the *Sale* at the *Sale* venue. You should be alert to this possibility of changes and ask in advance of bidding if there have been any.

Under this contract the *Seller's* liability in respect of the quality of the *Lot*, its fitness for any purpose and its conformity with any *Description* is limited. You are strongly advised to examine the *Lot* for yourself and/or obtain an independent examination of it before you buy it.

1 THE CONTRACT

- 1.1 These terms govern the *Contract for Sale* of the *Lot* by the *Seller* to the *Buyer*.
- 1.2 The Definitions and Glossary contained in Appendix 3 in the *Catalogue* are incorporated into this *Contract for Sale* and a separate copy can also be provided by *Bonhams* on request. Where words and phrases are used which are in the List of Definitions, they are printed in italics.
- 1.3 The *Seller* sells the *Lot* as the principal to the *Contract for Sale*, such contract being made between the *Seller* and you through *Bonhams* which acts in the sole capacity as the *Seller's* agent and not as an additional principal. However, if the *Catalogue* states that *Bonhams* sells the *Lot* as principal, or such a statement is made by an announcement by the *Auctioneer*, or by a notice at the *Sale*, or an insert in the *Catalogue*, then *Bonhams* is the *Seller* for the purposes of this agreement.

- 1.4 The contract is made on the fall of the *Auctioneer's* hammer in respect of the *Lot* when it is knocked down to you.

2 SELLER'S UNDERTAKINGS

- 2.1 The *Seller* undertakes to you that:
- 2.1.1 the *Seller* is the owner of the *Lot* or is duly authorised to sell the *Lot* by the owner;
- 2.1.2 save as disclosed in the *Entry* for the *Lot* in the *Catalogue*, the *Seller* sells the *Lot* with full title guarantee or, where the *Seller* is an executor, trustee, liquidator, receiver or administrator, with whatever right, title or interest he may have in the *Lot*;
- 2.1.3 except where the *Sale* is by an executor, trustee, liquidator, receiver or administrator the *Seller* is both legally entitled to sell the *Lot*, and legally capable of conferring on you quiet possession of the *Lot* and that the *Sale* conforms in every respect with the terms implied by the Sale of Goods Act 1979, Sections 12(1) and 12(2) (see the Definitions and Glossary);
- 2.1.4 the *Seller* has complied with all requirements, legal or otherwise, relating to any export or import of the *Lot*, and all duties and taxes in respect of the export or import of the *Lot* have (unless stated to the contrary in the *Catalogue* or announced by the *Auctioneer*) been paid and, so far as the *Seller* is aware, all third parties have complied with such requirements in the past;
- 2.1.5 subject to any alterations expressly identified as such made by announcement or notice at the *Sale* venue or by the *Notice to Bidders* or by an insert in the *Catalogue*, the *Lot* corresponds with the *Contractual Description* of the *Lot*, being that part of the *Entry* about the *Lot* in the *Catalogue* which is in bold letters and (except for colour) with any photograph of the *Lot* in the *Catalogue* and the contents of any *Condition Report* which has been provided to the *Buyer*.

3 DESCRIPTIONS OF THE LOT

- 3.1 Paragraph 2.1.5 sets out what is the *Contractual Description* of the *Lot*. In particular, the *Lot* is not sold as corresponding with that part of the *Entry* in the *Catalogue* which is not printed in bold letters, which merely sets out (on the *Seller's* behalf) *Bonhams'* opinion about the *Lot* and which is not part of the *Contractual Description* upon which the *Lot* is sold. Any statement or representation other than that part of the *Entry* referred to in paragraph 2.1.5 (together with any express alteration to it as referred to in paragraph 2.1.5), including any *Description* or *Estimate*, whether made orally or in writing, including in the *Catalogue* or on *Bonhams' Website*, or by conduct, or otherwise, and whether by or on behalf of the *Seller* or *Bonhams* and whether made prior to or during the *Sale*, is not part of the *Contractual Description* upon which the *Lot* is sold.
- 3.2 Except as provided in paragraph 2.1.5, the *Seller* does not make or give and does not agree to make or give any contractual promise, undertaking, obligation, guarantee, warranty, or representation of fact, or undertake any duty of care, in relation to any *Description* of the *Lot* or any *Estimate* in relation to it, nor of the accuracy or completeness of any *Description* or *Estimate* which may have been made by or on behalf of the *Seller* including by *Bonhams*. No such *Description* or *Estimate* is incorporated into this *Contract for Sale*.

4 FITNESS FOR PURPOSE AND SATISFACTORY QUALITY

- 4.1 The *Seller* does not make and does not agree to make any contractual promise, undertaking, obligation, guarantee, warranty, or representation of fact in relation to the satisfactory quality of the *Lot* or its fitness for any purpose.

- 4.2 The *Seller* will not be liable for any breach of any undertaking, whether implied by the Sale of Goods Act 1979 or otherwise, as to the satisfactory quality of the *Lot* or its fitness for any purpose.

5 RISK, PROPERTY AND TITLE

- 5.1 Risk in the *Lot* passes to you when it is knocked down to you on the fall of the *Auctioneer's* hammer in respect of the *Lot*. The *Seller* will not be responsible thereafter for the *Lot* prior to you collecting it from *Bonhams* or the *Storage Contractor*, with whom you have separate contract(s) as *Buyer*. You will indemnify the *Seller* and keep the *Seller* fully indemnified from and against all claims, proceedings, costs, expenses and losses arising in respect of any injury, loss and damage caused to the *Lot* after the fall of the *Auctioneer's* hammer until you obtain full title to it.
- 5.2 Title to the *Lot* remains in and is retained by the *Seller* until the *Purchase Price* and all other sums payable by you to *Bonhams* in relation to the *Lot* have been paid in full to, and received in cleared funds by, *Bonhams*.

6 PAYMENT

- 6.1 Your obligation to pay the *Purchase Price* arises when the *Lot* is knocked down to you on the fall of the *Auctioneer's* hammer in respect of the *Lot*.
- 6.2 Time will be of the essence in relation to payment of the *Purchase Price* and all other sums payable by you to *Bonhams*. Unless agreed in writing with you by *Bonhams* on the *Seller's* behalf (in which case you must comply with the terms of that agreement), all such sums must be paid to *Bonhams* by you in the currency in which the *Sale* was conducted by not later than 4.30pm on the second working day following the *Sale* and you must ensure that the funds are cleared by the seventh working day after the *Sale*. Payment must be made to *Bonhams* by one of the methods stated in the *Notice to Bidders* unless otherwise agreed with you in writing by *Bonhams*. If you do not pay any sums due in accordance with this paragraph, the *Seller* will have the rights set out in paragraph 8 below.

7 COLLECTION OF THE LOT

- 7.1 Unless otherwise agreed in writing with you by *Bonhams*, the *Lot* will be released to you or to your order only when *Bonhams* has received cleared funds to the amount of the full *Purchase Price* and all other sums owed by you to the *Seller* and to *Bonhams*.
- 7.2 The *Seller* is entitled to withhold possession from you of any other *Lot* he has sold to you at the same or at any other *Sale* and whether currently in *Bonhams'* possession or not until payment in full and in cleared funds of the *Purchase Price* and all other sums due to the *Seller* and/or *Bonhams* in respect of the *Lot*.
- 7.3 You will collect and remove the *Lot* at your own expense from *Bonhams'* custody and/ or control or from the *Storage Contractor's* custody in accordance with *Bonhams'* instructions or requirements.
- 7.4 You will be wholly responsible for packing, handling and transport of the *Lot* on collection and for complying with all import or export regulations in connection with the *Lot*.
- 7.5 You will be wholly responsible for any removal, storage or other charges or *Expenses* incurred by the *Seller* if you do not remove the *Lot* in accordance with this paragraph 7 and will indemnify the *Seller* against all charges, costs, including any legal costs and fees, *Expenses* and losses suffered by the *Seller* by reason of your failure to remove the *Lot* including any charges due under any *Storage Contract*. All such sums due to the *Seller* will be payable on demand.

8	FAILURE TO PAY FOR THE LOT	9	THE SELLER'S LIABILITY	10.3	If either party to the <i>Contract for Sale</i> is prevented from performing that party's respective obligations under the <i>Contract for Sale</i> by circumstances beyond its reasonable control or if performance of its obligations would by reason of such circumstances give rise to a significantly increased financial cost to it, that party will not, for so long as such circumstances prevail, be required to perform such obligations. This paragraph does not apply to the obligations imposed on you by paragraph 6.
8.1	If the <i>Purchase Price</i> for a <i>Lot</i> is not paid to <i>Bonhams</i> in full in accordance with the <i>Contract for Sale</i> the <i>Seller</i> will be entitled, with the prior written agreement of <i>Bonhams</i> but without further notice to you, to exercise one or more of the following rights (whether through <i>Bonhams</i> or otherwise):	9.1	The <i>Seller</i> will not be liable for any injury, loss or damage caused by the <i>Lot</i> after the fall of the <i>Auctioneer's</i> hammer in respect of the <i>Lot</i> .	10.4	Any notice or other communication to be given under the <i>Contract for Sale</i> must be in writing and may be delivered by hand or sent by first class post or air mail or fax transmission, if to the <i>Seller</i> , addressed c/o <i>Bonhams</i> at its address or fax number in the <i>Catalogue</i> (marked for the attention of the Company Secretary), and if to you to the address or fax number of the <i>Buyer</i> given in the <i>Bidding Form</i> (unless notice of any change of address is given in writing). It is the responsibility of the sender of the notice or communication to ensure that it is received in a legible form within any applicable time period.
8.1.1	to terminate immediately the <i>Contract for Sale</i> of the <i>Lot</i> for your breach of contract;	9.2	Subject to paragraph 9.3 below, except for breach of the express undertaking provided in paragraph 2.1.5, the <i>Seller</i> will not be liable for any breach of any term that the <i>Lot</i> will correspond with any <i>Description</i> applied to it by or on behalf of the <i>Seller</i> , whether implied by the Sale of Goods Act 1979 or otherwise.	10.5	If any term or any part of any term of the <i>Contract for Sale</i> is held to be unenforceable or invalid, such unenforceability or invalidity will not affect the enforceability and validity of the remaining terms or the remainder of the relevant term.
8.1.2	to resell the <i>Lot</i> by auction, private treaty or any other means on giving seven days' written notice to you of the intention to resell;	9.3	Unless the <i>Seller</i> sells the <i>Lot</i> in the course of a <i>Business</i> and the <i>Buyer</i> buys it as a <i>Consumer</i> ,	10.6	References in the <i>Contract for Sale</i> to <i>Bonhams</i> will, where appropriate, include reference to <i>Bonhams'</i> officers, employees and agents.
8.1.3	to retain possession of the <i>Lot</i> ;	9.3.1	the <i>Seller</i> will not be liable (whether in negligence, other tort, breach of contract or statutory duty or in restitution or under the Misrepresentation Act 1967, or in any other way) for any lack of conformity with, or inaccuracy, error, misdescription or omission in any <i>Description</i> of the <i>Lot</i> or any <i>Entry</i> or <i>Estimate</i> in relation to the <i>Lot</i> made by or on behalf of the <i>Seller</i> (whether made in writing, including in the <i>Catalogue</i> , or on the <i>Website</i> , or orally, or by conduct or otherwise) and whether made before or after this agreement or prior to or during the <i>Sale</i> ;	10.7	The headings used in the <i>Contract for Sale</i> are for convenience only and will not affect its interpretation.
8.1.4	to remove and store the <i>Lot</i> at your expense;	9.3.2	the <i>Seller</i> will not be liable for any loss of <i>Business</i> , <i>Business</i> profits or revenue or income or for loss of reputation or for disruption to <i>Business</i> or wasted time on the part of the <i>Buyer</i> or of the <i>Buyer's</i> management or staff or, for any indirect losses or consequential damages of any kind, irrespective in any case of the nature, volume or source of the loss or damage alleged to be suffered, and irrespective of whether the said loss or damage is caused by or claimed in respect of any negligence, other tort, breach of contract, statutory duty, restitutionary claim or otherwise;	10.8	In the <i>Contract for Sale</i> "including" means "including, without limitation".
8.1.5	to take legal proceedings against you for any sum due under the <i>Contract for Sale</i> and/or damages for breach of contract;	9.3.3	in any circumstances where the <i>Seller</i> is liable to you in respect of the <i>Lot</i> , or any act, omission, statement, or representation in respect of it, or this agreement or its performance, and whether in damages, for an indemnity or contribution or for a restitutionary remedy or in any way whatsoever, the <i>Seller's</i> liability will be limited to payment of a sum which will not exceed by way of maximum the amount of the <i>Purchase Price</i> of the <i>Lot</i> irrespective in any case of the nature, volume or source of any loss or damage alleged to be suffered or sum claimed as due, and irrespective of whether the liability arises from any negligence, other tort, breach of contract, statutory duty, bailee's duty, restitutionary claim or otherwise.	10.9	References to the singular will include reference to the plural (and vice versa) and reference to any one gender will include reference to the other genders.
8.1.6	to be paid interest on any monies due (after as well as before judgement or order) at the annual rate of 5% per annum above the base rate of National Westminster Bank Plc from time to time to be calculated on a daily basis from the date upon which such monies become payable until the date of actual payment;	9.4	Nothing set out in paragraphs 9.1 to 9.3 above will be construed as excluding or restricting (whether directly or indirectly) any person's liability or excluding or restricting any person's rights or remedies in respect of (i) fraud, or (ii) death or personal injury caused by the <i>Seller's</i> negligence (or any person under the <i>Seller's</i> control or for whom the <i>Seller</i> is legally responsible), or (iii) acts or omissions for which the <i>Seller</i> is liable under the Occupiers Liability Act 1957, or (iv) any other liability to the extent the same may not be excluded or restricted as a matter of law.	10.10	Reference to a numbered paragraph is to a paragraph of the <i>Contract for Sale</i> .
8.1.7	to repossess the <i>Lot</i> (or any part thereof) which has not become your property, and for this purpose (unless the <i>Buyer</i> buys the <i>Lot</i> as a <i>Consumer</i> from the <i>Seller</i> selling in the course of a <i>Business</i>) you hereby grant an irrevocable licence to the <i>Seller</i> by himself and to his servants or agents to enter upon all or any of your premises (with or without vehicles) during normal <i>Business</i> hours to take possession of the <i>Lot</i> or part thereof;			10.11	Save as expressly provided in paragraph 10.12 nothing in the <i>Contract for Sale</i> confers (or purports to confer) on any person who is not a party to the <i>Contract for Sale</i> any benefit conferred by, or the right to enforce any term of, the <i>Contract for Sale</i> .
8.1.8	to retain possession of any other property sold to you by the <i>Seller</i> at the <i>Sale</i> or any other auction or by private treaty until all sums due under the <i>Contract for Sale</i> shall have been paid in full in cleared funds;			10.12	Where the <i>Contract for Sale</i> confers an immunity from, and/or an exclusion or restriction of, the responsibility and/or liability of the <i>Seller</i> , it will also operate in favour and for the benefit of <i>Bonhams</i> , <i>Bonhams'</i> holding company and the subsidiaries of such holding company and the successors and assigns of <i>Bonhams</i> and of such companies and of any officer, employee and agent of <i>Bonhams</i> and such companies, each of whom will be entitled to rely on the relevant immunity and/or exclusion and/or restriction within and for the purposes of Contracts (Rights of Third Parties) Act 1999, which enables the benefit of a contract to be extended to a person who is not a party to the contract, and generally at law.
8.1.9	to retain possession of, and on seven days written notice to sell, <i>Without Reserve</i> , any of your other property in the possession of the <i>Seller</i> and/or of <i>Bonhams</i> (as bailee for the <i>Seller</i>) for any purpose (including, without limitation, other goods sold to you) and to apply any monies due to you as a result of such <i>Sale</i> in satisfaction or part satisfaction of any amounts owed to the <i>Seller</i> or to <i>Bonhams</i> ; and				
8.1.10	so long as such goods remain in the possession of the <i>Seller</i> or <i>Bonhams</i> as its bailee, to rescind the contract for the <i>Sale</i> of any other goods sold to you by the <i>Seller</i> at the <i>Sale</i> or at any other auction or by private treaty and apply any monies received from you in respect of such goods in part or full satisfaction of any amounts owed to the <i>Seller</i> or to <i>Bonhams</i> by you.				
8.2	You agree to indemnify the <i>Seller</i> against all legal and other costs of enforcement, all losses and other <i>Expenses</i> and costs (including any monies payable to <i>Bonhams</i> in order to obtain the release of the <i>Lot</i>) incurred by the <i>Seller</i> (whether or not court proceedings will have been issued) as a result of <i>Bonhams</i> taking steps under this paragraph 8 on a full indemnity basis together with interest thereon (after as well as before judgement or order) at the rate specified in paragraph 8.1.6 from the date upon which the <i>Seller</i> becomes liable to pay the same until payment by you.				
8.3	On any resale of the <i>Lot</i> under paragraph 8.1.2, the <i>Seller</i> will account to you in respect of any balance remaining from any monies received by him or on his behalf in respect of the <i>Lot</i> , after the payment of all sums due to the <i>Seller</i> and to <i>Bonhams</i> , within 28 days of receipt of such monies by him or on his behalf.				
		10	MISCELLANEOUS		
		10.1	You may not assign either the benefit or burden of the <i>Contract for Sale</i> .		
		10.2	The <i>Seller's</i> failure or delay in enforcing or exercising any power or right under the <i>Contract for Sale</i> will not operate or be deemed to operate as a waiver of his rights under it except to the extent of any express waiver given to you in writing. Any such waiver will not affect the <i>Seller's</i> ability subsequently to enforce any right arising under the <i>Contract for Sale</i> .		
				11	GOVERNING LAW
					All transactions to which the <i>Contract for Sale</i> applies and all connected matters will be governed by and construed in accordance with the laws of that part of the United Kingdom where the <i>Sale</i> takes place and the <i>Seller</i> and you each submit to the exclusive jurisdiction of the courts of that part of the United Kingdom, save that the <i>Seller</i> may bring proceedings against you in any other court of competent jurisdiction to the extent permitted by the laws of the relevant jurisdiction. <i>Bonhams</i> has a complaints procedure in place.

APPENDIX 2

BUYER'S AGREEMENT

IMPORTANT: These terms may be changed in advance of the Sale of the Lot to you, by the setting out of different terms in the Catalogue for the Sale and/or by placing an insert in the Catalogue and/or by notices at the Sale venue and/or by oral announcements before and during the Sale at the Sale venue. You should be alert to this possibility of changes and ask in advance of bidding if there have been any.

1 THE CONTRACT

- 1.1 These terms govern the contract between Bonhams personally and the Buyer, being the person to whom a Lot has been knocked down by the Auctioneer.
- 1.2 The Definitions and Glossary contained in Appendix 3 to the Catalogue for the Sale are incorporated into this agreement and a separate copy can also be provided by us on request. Where words and phrases which are defined in the List of Definitions are used in this agreement, they are printed in italics. Reference is made in this agreement to information printed in the Notice to Bidders, printed in the Catalogue for the Sale, and where such information is referred to it is incorporated into this agreement.
- 1.3 Except as specified in paragraph 4 of the Notice to Bidders the Contract for Sale of the Lot between you and the Seller is made on the fall of the Auctioneer's hammer in respect of the Lot, when it is knocked down to you. At that moment a separate contract is also made between you and Bonhams on the terms in this Buyer's Agreement.
- 1.4 We act as agents for the Seller and are not answerable or personally responsible to you for any breach of contract or other default by the Seller, unless Bonhams sells the Lot as principal.
- 1.5 Our personal obligations to you are governed by this agreement and we agree, subject to the terms below, to the following obligations:
- 1.5.1 we will, until the date and time specified in the Notice to Bidders or otherwise notified to you, store the Lot in accordance with paragraph 5;
- 1.5.2 subject to any power of the Seller or us to refuse to release the Lot to you, we will release the Lot to you in accordance with paragraph 4 once you have paid to us, in cleared funds, everything due to us and the Seller;
- 1.5.3 we will provide guarantees in the terms set out in paragraphs 9 and 10.
- 1.6 We do not make or give and do not agree to make or give any contractual promise, undertaking, obligation, Guarantee, warranty, representation of fact in relation to any Description of the Lot or any Estimate in relation to it, nor of the accuracy or completeness of any Description or Estimate which may have been made by us or on our behalf or by or on behalf of the Seller (whether made orally or in writing, including in the Catalogue or on Bonhams' Website, or by conduct, or otherwise), and whether made before or after this agreement or prior to or during the Sale. No such Description or Estimate is incorporated into this agreement between you and us. Any such Description or Estimate, if made by us or on our behalf, was (unless Bonhams itself sells the Lot as principal) made as agent on behalf of the Seller.

2 PERFORMANCE OF THE CONTRACT FOR SALE

You undertake to us personally that you will observe and comply with all your obligations and undertakings to the Seller under the Contract for Sale in respect of the Lot.

3 PAYMENT

- 3.1 Unless agreed in writing between you and us or as otherwise set out in the Notice to Bidders, you must pay to us by not later than 4.30pm on the second working day following the Sale:
- 3.1.1 the Purchase Price for the Lot;
- 3.1.2 a Buyer's Premium in accordance with the rates set out in the Notice to Bidders on each lot, and
- 3.1.3 if the Lot is marked [AP], an Additional Premium which is calculated and payable in accordance with the Notice to Bidders together with VAT on that sum if applicable so that all sums due to us are cleared funds by the seventh working day after the Sale.
- 3.2 You must also pay us on demand any Expenses payable pursuant to this agreement.
- 3.3 All payments to us must be made in the currency in which the Sale was conducted, using, unless otherwise agreed by us in writing, one of the methods of payment set out in the Notice to Bidders. Our invoices will only be addressed to the registered Bidder unless the Bidder is acting as an agent for a named principal and we have approved that arrangement, in which case we will address the invoice to the principal.
- 3.4 Unless otherwise stated in this agreement all sums payable to us will be subject to VAT at the appropriate rate and VAT will be payable by you on all such sums.
- 3.5 We may deduct and retain for our own benefit from the monies paid by you to us the Buyer's Premium, the Commission payable by the Seller in respect of the Lot, any Expenses and VAT and any interest earned and/or incurred until payment to the Seller.
- 3.6 Time will be of the essence in relation to any payment payable to us. If you do not pay the Purchase Price, or any other sum due to us in accordance with this paragraph 3, we will have the rights set out in paragraph 7 below.
- 3.7 Where a number of Lots have been knocked down to you, any monies we receive from you will be applied firstly pro-rata to pay the Purchase Price of each Lot and secondly pro-rata to pay all amounts due to Bonhams.

4 COLLECTION OF THE LOT

- 4.1 Subject to any power of the Seller or us to refuse to release the Lot to you, once you have paid to us, in cleared funds, everything due to the Seller and to us, we will release the Lot to you or as you may direct us in writing. The Lot will only be released on production of a buyer collection document, obtained from our cashier's office.
- 4.2 You must collect and remove the Lot at your own expense by the date and time specified in the Notice to Bidders, or if no date is specified, by 4.30pm on the seventh day after the Sale.
- 4.3 For the period referred to in paragraph 4.2, the Lot can be collected from the address referred to in the Notice to Bidders for collection on the days and times specified in the Notice to Bidders. Thereafter, the Lot may be removed elsewhere for storage and you must enquire from us as to when and where you can collect it, although this information will usually be set out in the Notice to Bidders.

- 4.4 If you have not collected the Lot by the date specified in the Notice to Bidders, you authorise us, acting as your agent and on your behalf, to enter into a contract (the "Storage Contract") with the Storage Contractor for the storage of the Lot on the then current standard terms and conditions agreed between Bonhams and the Storage Contractor (copies of which are available on request). If the Lot is stored at our premises storage fees at our current daily rates (currently a minimum of £3 plus VAT per Lot per day) will be payable from the expiry of the period referred to in paragraph 4.2. These storage fees form part of our Expenses.
- 4.5 Until you have paid the Purchase Price and any Expenses in full the Lot will either be held by us as agent on behalf of the Seller or held by the Storage Contractor as agent on behalf of the Seller and ourselves on the terms contained in the Storage Contract.
- 4.6 You undertake to comply with the terms of any Storage Contract and in particular to pay the charges (and all costs of moving the Lot into storage) due under any Storage Contract. You acknowledge and agree that you will not be able to collect the Lot from the Storage Contractor's premises until you have paid the Purchase Price, any Expenses and all charges due under the Storage Contract.
- 4.7 You will be wholly responsible for packing, handling and transport of the Lot on collection and for complying with all import or export regulations in connection with the Lot.
- 4.8 You will be wholly responsible for any removal, storage, or other charges for any Lot not removed in accordance with paragraph 4.2, payable at our current rates, and any Expenses we incur (including any charges due under the Storage Contract), all of which must be paid by you on demand and in any event before any collection of the Lot by you or on your behalf.

5 STORING THE LOT

We agree to store the Lot until the earlier of your removal of the Lot or until the time and date set out in the Notice to Bidders, on the Sale Information Page or at the back of the catalogue (or if no date is specified, by 4.30pm on the seventh day after the Sale) and, subject to paragraphs 6 and 10, to be responsible as bailee to you for damage to or the loss or destruction of the Lot (notwithstanding that it is not your property before payment of the Purchase Price). If you do not collect the Lot before the time and date set out in the Notice to Bidders (or if no date is specified, by 4.30pm on the seventh day after the Sale) we may remove the Lot to another location, the details of which will usually be set out in the relevant section of the Catalogue. If you have not paid for the Lot in accordance with paragraph 3, and the Lot is moved to any third party's premises, the Lot will be held by such third party strictly to Bonhams' order and we will retain our lien over the Lot until we have been paid in full in accordance with paragraph 3.

6 RESPONSIBILITY FOR THE LOT

- 6.1 Only on the payment of the Purchase Price to us will title in the Lot pass to you. However under the Contract for Sale, the risk in the Lot passed to you when it was knocked down to you.
- 6.2 You are advised to obtain insurance in respect of the Lot as soon as possible after the Sale.

7	FAILURE TO PAY OR TO REMOVE THE LOT AND PART PAYMENTS	7.3	If you pay us only part of the sums due to us such payment shall be applied firstly to the <i>Purchase Price</i> of the <i>Lot</i> (or where you have purchased more than one <i>Lot</i> pro-rata towards the <i>Purchase Price</i> of each <i>Lot</i>) and secondly to the <i>Buyer's Premium</i> (or where you have purchased more than one <i>Lot</i> pro-rata to the <i>Buyer's Premium</i> on each <i>Lot</i>) and thirdly to any other sums due to us.	9.3	Paragraph 9 will not apply in respect of a <i>Forgery</i> if:
7.1	If all sums payable to us are not so paid in full at the time they are due and/or the <i>Lot</i> is not removed in accordance with this agreement, we will without further notice to you be entitled to exercise one or more of the following rights (without prejudice to any rights we may exercise on behalf of the <i>Seller</i>):			9.3.1	the <i>Entry</i> in relation to the <i>Lot</i> contained in the <i>Catalogue</i> reflected the then accepted general opinion of scholars and experts or fairly indicated that there was a conflict of such opinion or reflected the then current opinion of an expert acknowledged to be a leading expert in the relevant field; or
7.1.1	to terminate this agreement immediately for your breach of contract;	7.4	We will account to you in respect of any balance we hold remaining from any monies received by us in respect of any <i>Sale</i> of the <i>Lot</i> under our rights under this paragraph 7 after the payment of all sums due to us and/or the <i>Seller</i> within 28 days of receipt by us of all such sums paid to us.	9.3.2	it can be established that the <i>Lot</i> is a <i>Forgery</i> only by means of a process not generally accepted for use until after the date on which the <i>Catalogue</i> was published or by means of a process which it was unreasonable in all the circumstances for us to have employed.
7.1.2	to retain possession of the <i>Lot</i> ;				
7.1.3	to remove, and/or store the <i>Lot</i> at your expense;				
7.1.4	to take legal proceedings against you for payment of any sums payable to us by you (including the <i>Purchase Price</i>) and/or damages for breach of contract;	8	CLAIMS BY OTHER PERSONS IN RESPECT OF THE LOT	9.4	You authorise us to carry out such processes and tests on the <i>Lot</i> as we in our absolute discretion consider necessary to satisfy ourselves that the <i>Lot</i> is or is not a <i>Forgery</i> .
7.1.5	to be paid interest on any monies due to us (after as well as before judgement or order) at the annual rate of 5% per annum above the base lending rate of National Westminster Bank Plc from time to time to be calculated on a daily basis from the date upon which such monies become payable until the date of actual payment;	8.1	Whenever it becomes apparent to us that the <i>Lot</i> is the subject of a claim by someone other than you and other than the <i>Seller</i> (or that such a claim can reasonably be expected to be made), we may, at our absolute discretion, deal with the <i>Lot</i> in any manner which appears to us to recognise the legitimate interests of ourselves and the other parties involved and lawfully to protect our position and our legitimate interests. Without prejudice to the generality of the discretion and by way of example, we may:	9.5	If we are satisfied that a <i>Lot</i> is a <i>Forgery</i> we will (as principal) purchase the <i>Lot</i> from you and you will transfer the title to the <i>Lot</i> in question to us, with full title guarantee, free from any liens, charges, encumbrances and adverse claims, in accordance with the provisions of Sections 12(1) and 12(2) of the Sale of Goods Act 1979 and we will pay to you an amount equal to the sum of the <i>Purchase Price</i> , <i>Buyer's Premium</i> , <i>VAT</i> and <i>Expenses</i> paid by you in respect of the <i>Lot</i> .
7.1.6	to repossess the <i>Lot</i> (or any part thereof) which has not become your property, and for this purpose (unless you buy the <i>Lot</i> as a <i>Consumer</i>) you hereby grant an irrevocable licence to us, by ourselves, our servants or agents, to enter upon all or any of your premises (with or without vehicles) during normal business hours to take possession of any <i>Lot</i> or part thereof;	8.1.1	retain the <i>Lot</i> to investigate any question raised or reasonably expected by us to be raised in relation to the <i>Lot</i> ; and/or	9.6	The benefit of paragraph 9 is personal to, and incapable of assignment by, you.
7.1.7	to sell the <i>Lot Without Reserve</i> by auction, private treaty or any other means on giving you three months' written notice of our intention to do so;	8.1.2	deliver the <i>Lot</i> to a person other than you; and/or	9.7	If you sell or otherwise dispose of your interest in the <i>Lot</i> , all rights and benefits under this paragraph will cease.
7.1.8	to retain possession of any of your other property in our possession for any purpose (including, without limitation, other goods sold to you or with us for <i>Sale</i>) until all sums due to us have been paid in full;	8.1.3	commence interpleader proceedings or seek any other order of any court, mediator, arbitrator or government body; and/or	9.8	Paragraph 9 does not apply to a <i>Lot</i> made up of or including a Chinese painting or Chinese paintings, a motor vehicle or motor vehicles, a <i>Stamp</i> or <i>Stamps</i> or a <i>Book</i> or <i>Books</i> .
7.1.9	to apply any monies received from you for any purpose whether at the time of your default or at any time thereafter in payment or part payment of any sums due to us by you under this agreement;	8.1.4	require an indemnity and/or security from you in return for pursuing a course of action agreed to by you.		
7.1.10	on three months' written notice to sell, <i>Without Reserve</i> , any of your other property in our possession or under our control for any purpose (including other goods sold to you or with us for <i>Sale</i>) and to apply any monies due to you as a result of such <i>Sale</i> in payment or part payment of any amounts owed to us;	8.2	The discretion referred to in paragraph 8.1:	10	OUR LIABILITY
7.1.11	refuse to allow you to register for a future <i>Sale</i> or to reject a bid from you at any future <i>Sale</i> or to require you to pay a deposit before any bid is accepted by us at any future <i>Sale</i> in which case we will be entitled to apply such deposit in payment or part payment, as the case may be, of the <i>Purchase Price</i> of any <i>Lot</i> of which you are the <i>Buyer</i> .	8.2.1	may be exercised at any time during which we have actual or constructive possession of the <i>Lot</i> , or at any time after such possession, where the cessation of such possession has occurred by reason of any decision, order or ruling of any court, mediator, arbitrator or government body; and	10.1	We will not be liable whether in negligence, other tort, breach of contract or statutory duty or in restitution or under the Misrepresentation Act 1967 or in any other way for lack of conformity with or any inaccuracy, error, misdescription or omission in any <i>Description</i> of the <i>Lot</i> or any <i>Entry</i> or <i>Estimate</i> in respect of it, made by us or on our behalf or by or on behalf of the <i>Seller</i> (whether made in writing, including in the <i>Catalogue</i> , or on the <i>Bonhams' Website</i> , or orally, or by conduct or otherwise) and whether made before or after this agreement or prior to or during the <i>Sale</i> .
7.2	You agree to indemnify us against all legal and other costs, all losses and all other <i>Expenses</i> (whether or not court proceedings will have been issued) incurred by us as a result of our taking steps under this paragraph 7 on a full indemnity basis together with interest thereon (after as well as before judgement or order) at the rate specified in paragraph 7.1.5 from the date upon which we become liable to pay the same until payment by you.	8.2.2	will not be exercised unless we believe that there exists a serious prospect of a good arguable case in favour of the claim.	10.2	Our duty to you while the <i>Lot</i> is at your risk and/or your property and in our custody and/or control is to exercise reasonable care in relation to it, but we will not be responsible for damage to the <i>Lot</i> or to other persons or things caused by:
		9	FORGERIES	10.2.1	handling the <i>Lot</i> if it was affected at the time of <i>Sale</i> to you by woodworm and any damage is caused as a result of it being affected by woodworm; or
		9.1	We undertake a personal responsibility for any <i>Forgery</i> in accordance with the terms of this paragraph 9.	10.2.2	changes in atmospheric pressure; nor will we be liable for:
		9.2	Paragraph 9 applies only if:	10.2.3	damage to tension stringed musical instruments; or
		9.2.1	your name appears as the named person to whom the original invoice was made out by us in respect of the <i>Lot</i> and that invoice has been paid; and	10.2.4	damage to gilded picture frames, plaster picture frames or picture frame glass; and if the <i>Lot</i> is or becomes dangerous, we may dispose of it without notice to you in advance in any manner we think fit and we will be under no liability to you for doing so.
		9.2.2	you notify us in writing as soon as reasonably practicable after you have become aware that the <i>Lot</i> is or may be a <i>Forgery</i> , and in any event within one year after the <i>Sale</i> , that the <i>Lot</i> is a <i>Forgery</i> ; and		
		9.2.3	within one month after such notification has been given, you return the <i>Lot</i> to us in the same condition as it was at the time of the <i>Sale</i> , accompanied by written evidence that the <i>Lot</i> is a <i>Forgery</i> and details of the <i>Sale</i> and <i>Lot</i> number sufficient to identify the <i>Lot</i> .		

10.3.1 We will not be liable to you for any loss of *Business*, *Business* profits, revenue or income or for loss of *Business* reputation or for disruption to *Business* or wasted time on the part of the *Buyer's* management or staff or, if you are buying the *Lot* in the course of a *Business*, for any indirect losses or consequential damages of any kind, irrespective in any case of the nature, volume or source of the loss or damage alleged to be suffered, and irrespective of whether the said loss or damage is caused by or claimed in respect of any negligence, other tort, breach of contract, statutory duty, bailee's duty, a restitutionary claim or otherwise.

10.3.2 Unless you buy the *Lot* as a *Consumer*, in any circumstances where we are liable to you in respect of a *Lot*, or any act, omission, statement, representation in respect of it, or this agreement or its performance, and whether in damages, for an indemnity or contribution or for a restitutionary remedy or in any way whatsoever, our liability will be limited to payment of a sum which will not exceed by way of maximum the amount of the *Purchase Price* of the *Lot* plus *Buyer's Premium* (less any sum you may be entitled to recover from the *Seller*) irrespective in any case of the nature, volume or source of any loss or damage alleged to be suffered or sum claimed as due, and irrespective of whether the liability arises from negligence, other tort, breach of contract, statutory duty, bailee's duty, a restitutionary claim or otherwise.

You may wish to protect yourself against loss by obtaining insurance.

10.4 Nothing set out above will be construed as excluding or restricting (whether directly or indirectly) any person's liability or excluding or restricting any person's rights or remedies in respect of (i) fraud, or (ii) death or personal injury caused by our negligence (or any person under our control or for whom we are legally responsible), or (iii) acts or omissions for which we are liable under the Occupiers Liability Act 1957, or (iv) any other liability to the extent the same may not be excluded or restricted as a matter of law, or (v) under our undertaking in paragraph 9 of these conditions.

11 BOOKS MISSING TEXT OR ILLUSTRATIONS

Where the *Lot* is made up wholly of a *Book* or *Books* and any *Book* does not contain text or illustrations (in either case referred to as a "non-conforming *Lot*"), we undertake a personal responsibility for such a non-conforming *Lot* in accordance with the terms of this paragraph, if:

the original invoice was made out by us to you in respect of the *Lot* and that invoice has been paid; and

you notify us in writing as soon as reasonably practicable after you have become aware that the *Lot* is or may be a non-conforming *Lot*, and in any event within 20 days after the *Sale* (or such longer period as we may agree in writing) that the *Lot* is a non-conforming *Lot*; and

within 20 days of the date of the relevant *Sale* (or such longer period as we may agree in writing) you return the *Lot* to us in the same condition as it was at the time of the *Sale*, accompanied by written evidence that the *Lot* is a non-conforming *Lot* and details of the *Sale* and *Lot* number sufficient to identify the *Lot*.

but not if:

the *Entry* in the *Catalogue* in respect of the *Lot* indicates that the rights given by this paragraph do not apply to it; or

the *Entry* in the *Catalogue* in respect of the *Lot* reflected the then accepted general opinion of scholars and experts or fairly indicated that there was a conflict of such opinion; or

it can be established that the *Lot* is a non-conforming *Lot* only by means of a process not generally accepted for use until after the date on which the *Catalogue* was published or by means of a process which it was unreasonable in all the circumstances for us to have employed; or

the *Lot* comprises atlases, maps, autographs, manuscripts, extra illustrated books, music or periodical publications; or

the *Lot* was listed in the *Catalogue* under "collections" or "collections and various" or the *Lot* was stated in the *Catalogue* to comprise or contain a collection, issue or *Books* which are undescribed or the missing text or illustrations are referred to or the relevant parts of the *Book* contain blanks, half titles or advertisements.

If we are reasonably satisfied that a *Lot* is a non-conforming *Lot*, we will (as principal) purchase the *Lot* from you and you will transfer the title to the *Lot* in question to us, with full title guarantee, free from any liens, charges, encumbrances and adverse claims and we will pay to you an amount equal to the sum of the *Purchase Price* and *Buyer's Premium* paid by you in respect of the *Lot*.

The benefit of paragraph 10 is personal to, and incapable of assignment by, you and if you sell or otherwise dispose of your interest in the *Lot*, all rights and benefits under this paragraph will cease.

12 MISCELLANEOUS

12.1 You may not assign either the benefit or burden of this agreement.

12.2 Our failure or delay in enforcing or exercising any power or right under this agreement will not operate or be deemed to operate as a waiver of our rights under it except to the extent of any express waiver given to you in writing. Any such waiver will not affect our ability subsequently to enforce any right arising under this agreement.

12.3 If either party to this agreement is prevented from performing that party's respective obligations under this agreement by circumstances beyond its reasonable control or if performance of its obligations would by reason of such circumstances give rise to a significantly increased financial cost to it, that party will not, for so long as such circumstances prevail, be required to perform such obligations. This paragraph does not apply to the obligations imposed on you by paragraph 3.

12.4 Any notice or other communication to be given under this agreement must be in writing and may be delivered by hand or sent by first class post or air mail or fax transmission (if to *Bonhams* marked for the attention of the Company Secretary), to the address or fax number of the relevant party given in the *Contract Form* (unless notice of any change of address is given in writing). It is the responsibility of the sender of the notice or communication to ensure that it is received in a legible form within any applicable time period.

12.5 If any term or any part of any term of this agreement is held to be unenforceable or invalid, such unenforceability or invalidity will not affect the enforceability and validity of the remaining terms or the remainder of the relevant term.

12.6 References in this agreement to *Bonhams* will, where appropriate, include reference to *Bonhams'* officers, employees and agents.

12.7 The headings used in this agreement are for convenience only and will not affect its interpretation.

12.8 In this agreement "including" means "including, without limitation".

12.9 References to the singular will include reference to the plural (and vice versa) and reference to any one gender will include reference to the other genders.

12.10 Reference to a numbered paragraph is to a paragraph of this agreement.

12.11 Save as expressly provided in paragraph 12.12 nothing in this agreement confers (or purports to confer) on any person who is not a party to this agreement any benefit conferred by, or the right to enforce any term of, this agreement.

12.12 Where this agreement confers an immunity from, and/or an exclusion or restriction of, the responsibility and/or liability of *Bonhams*, it will also operate in favour and for the benefit of *Bonhams'* holding company and the subsidiaries of such holding company and the successors and assigns of *Bonhams* and of such companies and of any officer, employee and agent of *Bonhams* and such companies, each of whom will be entitled to rely on the relevant immunity and/or exclusion and/or restriction within and for the purposes of Contracts (Rights of Third Parties) Act 1999, which enables the benefit of a contract to be extended to a person who is not a party to the contract, and generally at law.

13 GOVERNING LAW

All transactions to which this agreement applies and all connected matters will be governed by and construed in accordance with the laws of that part of the United Kingdom where the *Sale* takes (or is to take) place and we and you each submit to the exclusive jurisdiction of the courts of that part of the United Kingdom, save that we may bring proceedings against you in any other court of competent jurisdiction to the extent permitted by the laws of the relevant jurisdiction. *Bonhams* has a complaints procedure in place.

DATA PROTECTION – USE OF YOUR INFORMATION

Where we obtain any personal information about you, we shall only use it in accordance with the terms of our Privacy Policy (subject to any additional specific consent(s) you may have given at the time your information was disclosed). A copy of our Privacy Policy can be found on our *Website* www.bonhams.com or requested by post from Customer Services Department, 101 New Bond Street, London W1S 1SR, United Kingdom or by email from info@bonhams.com.

APPENDIX 3

DEFINITIONS AND GLOSSARY

Where these Definitions and Glossary are incorporated, the following words and phrases used have (unless the context otherwise requires) the meanings given to them below. The Glossary is to assist you to understand words and phrases which have a specific legal meaning with which you may not be familiar.

LIST OF DEFINITIONS

"Additional Premium" a premium, calculated in accordance with the *Notice to Bidders*, to cover *Bonhams'* Expenses relating to the payment of royalties under the Artists Resale Right Regulations 2006 which is payable by the *Buyer* to *Bonhams* on any *Lot* marked [AR] which sells for a *Hammer Price* which together with the *Buyer's Premium* (but excluding any VAT) equals or exceeds 1000 euros (converted into the currency of the *Sale* using the European Central Bank Reference rate prevailing on the date of the *Sale*).
"Auctioneer" the representative of *Bonhams* conducting the *Sale*.

"Bidder" a person who has completed a *Bidding Form*.

"Bidding Form" our Bidding Registration Form, our Absentee Bidding Form or our Telephone Bidding Form.

"Bonhams" Bonhams 1793 Limited or its successors or assigns. *Bonhams* is also referred to in the *Buyer's Agreement*, the Conditions of Business and the *Notice to Bidders* by the words "we", "us" and "our".

"Book" a printed *Book* offered for *Sale* at a specialist *Book Sale*.

"Business" includes any trade, *Business* and profession.

"Buyer" the person to whom a *Lot* is knocked down by the *Auctioneer*. The *Buyer* is also referred to in the *Contract for Sale* and the *Buyer's Agreement* by the words "you" and "your".

"Buyer's Agreement" the contract entered into by *Bonhams* with the *Buyer* (see Appendix 2 in the *Catalogue*).

"Buyer's Premium" the sum calculated on the *Hammer Price* at the rates stated in the *Notice to Bidders*.

"Catalogue" the *Catalogue* relating to the relevant *Sale*, including any representation of the *Catalogue* published on our *Website*.

"Commission" the *Commission* payable by the *Seller* to *Bonhams* calculated at the rates stated in the *Contract Form*.

"Condition Report" a report on the physical condition of a *Lot* provided to a *Bidder* or potential *Bidder* by *Bonhams* on behalf of the *Seller*.

"Conditions of Sale" the *Notice to Bidders*, *Contract for Sale*, *Buyer's Agreement* and Definitions and Glossary.

"Consignment Fee" a fee payable to *Bonhams* by the *Seller* calculated at rates set out in the Conditions of Business.

"Consumer" a natural person who is acting for the relevant purpose outside his trade, *Business* or profession.

"Contract Form" the *Contract Form*, or vehicle *Entry* form, as applicable, signed by or on behalf of the *Seller* listing the *Lots* to be offered for *Sale* by *Bonhams*.

"Contract for Sale" the *Sale* contract entered into by the *Seller* with the *Buyer* (see Appendix 1 in the *Catalogue*).

"Contractual Description" the only *Description* of the *Lot* (being that part of the *Entry* about the *Lot* in the *Catalogue* which is in bold letters, any photograph (except for the colour) and the contents of any *Condition Report*) to which the *Seller* undertakes in the *Contract for Sale* the *Lot* corresponds.

"Description" any statement or representation in any way descriptive of the *Lot*, including any statement or representation relating to its authorship, attribution, condition, provenance, authenticity, style, period, age, suitability, quality, origin, value, estimated selling price (including the *Hammer Price*).

"Entry" a written statement in the *Catalogue* identifying the *Lot* and its *Lot* number which may contain a *Description* and illustration(s) relating to the *Lot*.

"Estimate" a statement of our opinion of the range within which the hammer is likely to fall.

"Expenses" charges and *Expenses* paid or payable by *Bonhams* in respect of the *Lot* including legal *Expenses*, banking charges and *Expenses* incurred as a result of an electronic transfer of money, charges and *Expenses* for loss and damage cover, insurance, *Catalogue* and other reproductions and illustrations, any customs duties, advertising, packing or shipping costs, reproductions rights' fees, taxes, levies, costs of testing, searches or enquiries, preparation of the *Lot* for *Sale*, storage charges, removal charges, removal charges or costs of collection from the *Seller* as the *Seller's* agents or from a defaulting *Buyer*, plus *VAT* if applicable.

"Forgery" an imitation intended by the maker or any other person to deceive as to authorship, attribution, origin, authenticity, style, date, age, period, provenance, culture, source or composition, which at the date of the *Sale* had a value materially less than it would have had if the *Lot* had not been such an imitation, and which is not stated to be such an imitation in any description of the *Lot*. A *Lot* will not be a *Forgery* by reason of any damage to, and/or restoration and/or modification work (including repainting or over painting) having been carried out on the *Lot*, where that damage, restoration or modification work (as the case may be) does not substantially affect the identity of the *Lot* as one conforming to the *Description* of the *Lot*.

"Guarantee" the obligation undertaken personally by *Bonhams* to the *Buyer* in respect of any *Forgery* and, in the case of specialist *Stamp Sales* and/or specialist *Book Sales*, a *Lot* made up of a *Stamp* or *Stamps* or a *Book* or *Books* as set out in the *Buyer's Agreement*.

"Hammer Price" the price in the currency in which the *Sale* is conducted at which a *Lot* is knocked down by the *Auctioneer*.

"Loss and Damage Warranty" means the warranty described in paragraph 8.2 of the Conditions of Business.

"Loss and Damage Warranty Fee" means the fee described in paragraph 8.2.3 of the Conditions of Business.

"Lot" any item consigned to *Bonhams* with a view to its *Sale* at auction or by private treaty (and reference to any *Lot* will include, unless the context otherwise requires, reference to individual items comprised in a group of two or more items offered for *Sale* as one *Lot*).

"Motoring Catalogue Fee" a fee payable by the *Seller* to *Bonhams* in consideration of the additional work undertaken by *Bonhams* in respect of the cataloguing of motor vehicles and in respect of the promotion of *Sales* of motor vehicles.

"New Bond Street" means *Bonhams's* saleroom at 101 New Bond Street, London W1S 1SR.

"Notional Charges" the amount of *Commission* and *VAT* which would have been payable if the *Lot* had been sold at the *Notional Price*.

"Notional Fee" the sum on which the *Consignment Fee* payable to *Bonhams* by the *Seller* is based and which is calculated according to the formula set out in the Conditions of Business.

"Notional Price" the latest in time of the average of the high and low *Estimates* given by us to you or stated in the *Catalogue* or, if no such *Estimates* have been given or stated, the *Reserve* applicable to the *Lot*.

"Notice to Bidders" the notice printed at the back or front of our *Catalogues*.

"Purchase Price" the aggregate of the *Hammer Price* and *VAT* on the *Hammer Price* (where applicable), the *Buyer's Premium* and *VAT* on the *Buyer's Premium* and any *Expenses*.

"Reserve" the minimum price at which a *Lot* may be sold (whether at auction or by private treaty).

"Sale" the auction *Sale* at which a *Lot* is to be offered for *Sale* by *Bonhams*.

"Sale Proceeds" the net amount due to the *Seller* from the *Sale* of a *Lot*, being the *Hammer Price* less the *Commission*, any *VAT* chargeable thereon, *Expenses* and any other amount due to us in whatever capacity and howsoever arising.

"Seller" the person who offers the *Lot* for *Sale* named on the *Contract Form*. Where the person so named identifies on the form another person as acting as his agent, or where the person named on the *Contract Form* acts as an agent for a principal (whether such agency is disclosed to *Bonhams* or not), "*Seller*" includes both the agent and the principal who shall be jointly and severally liable as such. The *Seller* is also referred to in the Conditions of Business by the words "you" and "your".

"Specialist Examination" a visual examination of a *Lot* by a specialist on the *Lot*.

"Stamp" means a postage *Stamp* offered for *Sale* at a Specialist *Stamp Sale*.

"Standard Examination" a visual examination of a *Lot* by a non-specialist member of *Bonhams's* staff.

"Storage Contract" means the contract described in paragraph 8.3.3 of the Conditions of Business or paragraph 4.4 of the *Buyer's Agreement* (as appropriate).

"Storage Contractor" means the company identified as such in the *Catalogue*.

"Terrorism" means any act or threatened act of terrorism, whether any person is acting alone or on behalf of or in connection with any organisation(s) and/or government(s), committed for political, religious or ideological or similar purposes including, but not limited to, the intention to influence any government and/or put the public or any section of the public into fear.

"Trust Account" the bank account of *Bonhams* into which all sums received in respect of the *Purchase Price* of any *Lot* will be paid, such account to be a distinct and separate account to *Bonhams's* normal business bank account.

"VAT" value added tax at the prevailing rate at the date of the *Sale* in the United Kingdom.

"Website" *Bonhams Website* at www.bonhams.com

"Withdrawal Notice" the *Seller's* written notice to *Bonhams* revoking *Bonhams's* instructions to sell a *Lot*.

"Without Reserve" where there is no minimum price at which a *Lot* may be sold (whether at auction or by private treaty).

GLOSSARY

The following expressions have specific legal meanings with which you may not be familiar. The following glossary is intended to give you an understanding of those expressions but is not intended to limit their legal meanings:

"artist's resale right": the right of the creator of a work of art to receive a payment on *Sales* of that work subsequent to the original *Sale* of that work by the creator of it as set out in the Artists Resale Right Regulations 2006.

"bailee": a person to whom goods are entrusted.

"indemnity": an obligation to put the person who has the benefit of the indemnity in the same position in which he would have been, had the circumstances giving rise to the indemnity not arisen and the expression "indemnity" is construed accordingly.

"interpleader proceedings": proceedings in the Courts to determine ownership or rights over a *Lot*.

"knocked down": when a *Lot* is sold to a *Bidder*, indicated by the fall of the hammer at the *Sale*.

"lien": a right for the person who has possession of the *Lot* to retain possession of it.

"risk": the possibility that a *Lot* may be lost, damaged, destroyed, stolen, or deteriorate in condition or value.

"title": the legal and equitable right to the ownership of a *Lot*.

"tort": a legal wrong done to someone to whom the wrong doer has a duty of care.

SALE OF GOODS ACT 1979

The following is an extract from the Sale of Goods Act 1979:

"Section 12 Implied terms about title, etc

- (1) In a contract of sale, other than one to which subsection (3) below applies, there is an implied term on the part of the seller that in the case of a sale he has a right to sell the goods, and in the case of an agreement to sell he will have such a right at the time when the property is to pass.
- (2) In a contract of sale, other than one to which subsection (3) below applies, there is also an implied term that-
 - (a) the goods are free, and will remain free until the time when the property is to pass, from any charge or encumbrance not disclosed or known to the buyer before the contract is made, and
 - (b) the buyer will enjoy quiet possession of the goods except in so far as it may be disturbed by the owner or other person entitled to the benefit of any charge or encumbrance so disclosed or known.
- (3) This subsection applies to a contract of sale in the case of which there appears from the contract or is to be inferred from its circumstances an intention that the seller should transfer only such title as he or a third person may have.
- (4) In a contract to which subsection (3) above applies there is an implied term that all charges or encumbrances known to the seller and not known to the buyer have been disclosed to the buyer before the contract is made.
- (5) In a contract to which subsection (3) above applies there is also an implied term that none of the following will disturb the buyer's quiet possession of the goods, namely:
 - (a) the seller;
 - (b) in a case where the parties to the contract intend that the seller should transfer only such title as a third person may have, that person;
 - (c) anyone claiming through or under the seller or that third person otherwise than under a charge or encumbrance disclosed or known to the buyer before the contract is made.
- (5A) As regards England and Wales and Northern Ireland, the term implied by subsection (1) above is a condition and the terms implied by subsections (2), (4) and (5) above are warranties."

Bonhams Specialist Departments

To e-mail any of the below use the first name dot second name @bonhams.com eg. charles.obrien@bonhams.com

19th Century Paintings

UK
Charles O' Brien
+44 20 7468 8360
U.S.A
Madalina Lazen
+1 212 644 9108

20th Century British Art

Matthew Bradbury
+44 20 7468 8295

Aboriginal Art

Francesca Cavazzini
+61 2 8412 2222

African, Oceanic & Pre-Columbian Art

U.S.A
Fredric Backlar
+1 323 436 5416

American Paintings

Kayla Carlsen
+1 917 206 1699

Antiquities

Madeleine Perridge
+44 20 7468 8226

Antique Arms & Armour

UK
David Williams
+44 20 7393 3807
U.S.A
Paul Carella
+1 415 503 3360

Art Collections, Estates & Valuations

Harvey Cammell
+44 (0) 20 7468 8340

Art Nouveau & Decorative Art & Design

UK
Mark Oliver
+44 20 7393 3856
U.S.A
Frank Maraschiello
+1 212 644 9059

Australian Art

Merryn Schriever
+61 2 8412 2222
Alex Clark
+61 3 8640 4088

Australian Colonial Furniture and Australiana

+61 2 8412 2222

Books, Maps & Manuscripts

UK
Matthew Haley
+44 20 7393 3817
U.S.A
Christina Geiger
+1 212 644 9094

British & European Glass

UK
John Sandon
+44 20 7468 8244
U.S.A.
Suzy Pai
+1 415 503 3343

British Ceramics

UK
John Sandon
+44 20 7468 8244

California & American Paintings

Scot Levitt
+1 323 436 5425

Carpets

UK
carpets@bonhams.com
U.S.A.
Hadjji Rahimpour
+1 415 503 3392

Chinese & Asian Art

UK
Asaph Hyman
+44 20 7468 5888
U.S.A
Dessa Goddard
+1 415 503 3333
HONG KONG
+852 3607 0010
AUSTRALIA
Yvett Klein
+61 2 8412 2222

Clocks

UK
James Stratton
+44 20 7468 8364
U.S.A
Jonathan Snellenburg
+1 212 461 6530

Coins & Medals

UK
John Millensted
+44 20 7393 3914
U.S.A
Paul Song
+1 323 436 5455

Contemporary Art

UK
Ralph Taylor
+44 20 7447 7403
U.S.A
Jeremy Goldsmith
+1 917 206 1656

Entertainment Memorabilia

UK
Katherine Schofield
+44 20 7393 3871
U.S.A
Catherine Williamson
+1 323 436 5442

European Ceramics

UK
Sebastian Kuhn
+44 20 7468 8384
U.S.A
Peter Scott
+1 415 503 3326

Furniture & Works of Art

UK
Nicholas Faulkner
+44 20 8963 2845
U.S.A
Andrew Jones
+1 415 503 3413

Greek Art

Olympia Pappa
+44 20 7468 8314

Golf Sporting Memorabilia

Kevin Mcgimpsey
+44 131 240 2296

Irish Art

Penny Day
+44 20 7468 8366

Impressionist & Modern Art

UK
India Phillips
+44 20 7468 8328
U.S.A
William O'Reilly
+1 212 644 9135

Islamic & Indian Art

Oliver White
+44 20 7468 8303

Japanese Art

UK
Suzannah Yip
+44 20 7468 8368
U.S.A
Jeff Olson
+1 212 461 6516

Jewellery

UK
Jean Ghika
+44 20 7468 8282
U.S.A
Susan Abeles
+1 212 461 6525
HONG KONG
Graeme Thompson
+852 3607 0006

Marine Art

UK
Veronique Scorer
+44 20 7393 3962
U.S.A
Gregg Dietrich
+1 917 206 1697

Mechanical Music

Jon Baddeley
+44 20 7393 3872

Modern, Contemporary & Latin American Art

U.S.A
Alexis Chompaisal
+1 323 436 5469

Modern Design

Gareth Williams
+44 20 7468 5879

Motor Cars

UK
Tim Schofield
+44 20 7468 5804
U.S.A
Mark Osborne
+1 415 503 3353
EUROPE
Philip Kantor
+32 476 879 471

Automobilia

UK
Toby Wilson
+44 8700 273 619
Adrian Pipiros
+44 8700 273621

Motorcycles

Ben Walker
+44 8700 273616

Native American Art

Ingmars Lindbergs
+1 415 503 3393

Natural History

U.S.A
Claudia Florian
+1 323 436 5437

Old Master Pictures

UK
Andrew Mckenzie
+44 20 7468 8261
U.S.A
Mark Fisher
+1 323 436 5488

Orientalist Art

Charles O'Brien
+44 20 7468 8360

Photography

U.S.A
Judith Eurich
+1 415 503 3259

Prints and Multiples

UK
Tanya Grigoroglou
+44 207 468 8212
U.S.A
Judith Eurich
+1 415 503 3259

Russian Art

UK
Daria Chernenko
+44 20 7468 8334
U.S.A
Yelena Harbick
+1 212 644 9136

Scientific Instruments

Jon Baddeley
+44 20 7393 3872
U.S.A.
Jonathan Snellenburg
+1 212 461 6530

Scottish Pictures

Chris Brickley
+44 131 240 2297

Silver & Gold Boxes

UK
Ellis Finch
+44 20 7393 3973
U.S.A
Aileen Ward
+1 323 436 5463

South African Art

Giles Peppiatt
+44 20 7468 8355

Sporting Guns

Patrick Hawes
+44 20 7393 3815

Travel Pictures

Veronique Scorer
+44 20 7393 3962

Urban Art

Gareth Williams
+44 20 7468 5879

Watches & Wristwatches

UK
Jonathan Darracott
+44 20 7447 7412
U.S.A.
Jonathan Snellenburg
+1 212 461 6530
HONG KONG
Cherie Wong
+852 3607 0012

Whisky

UK
Martin Green
+44 1292 520000
U.S.A
Gary Durso
+1 917 206 1653
HONG KONG
Daniel Lam
+852 3607 0004

Wine

UK
Richard Harvey
+44 (0) 20 7468 5811
U.S.A
Gary Durso
+1 917 206 1653
HONG KONG
Daniel Lam
+852 3607 0004

UNITED KINGDOM

London

101 New Bond Street ●
London W1S 1SR
+44 20 7447 7447
+44 20 7447 7400 fax

Montpelier Street ●
London SW7 1HH
+44 20 7393 3900
+44 20 7393 3905 fax

South East England

Brighton & Hove

19 Palmeira Square
Hove, East Sussex
BN3 2JN
+44 1273 220 000
+44 1273 220 335 fax

Guildford

Millmead,
Guildford,
Surrey GU2 4BE
+44 1483 504 030
+44 1483 450 205 fax

Isle of Wight

+44 1273 220 000

Representative:

Kent

George Dawes
+44 1483 504 030

West Sussex

+44 (0) 1273 220 000

South West England

Bath

Queen Square House
Charlotte Street
Bath BA1 2LL
+44 1225 788 988
+44 1225 446 675 fax

Cornwall – Truro

36 Lemon Street
Truro
Cornwall
TR1 2NR
+44 1872 250 170
+44 1872 250 179 fax

Exeter

The Lodge
Southernhay West Exeter,
Devon
EX1 1JG
+44 1392 425 264
+44 1392 494 561 fax

Winchester

The Red House
Hyde Street
Winchester
Hants SO23 7DX
+44 1962 862 515
+44 1962 865 166 fax

Tetbury

22a Long Street
Tetbury
Gloucestershire
GL8 8AQ
+44 1666 502 200
+44 1666 505 107 fax

Representatives:

Dorset

Bill Allan
+44 1935 815 271

East Anglia

Bury St. Edmunds

21 Churchgate Street
Bury St Edmunds
Suffolk IP33 1RG
+44 1284 716 190
+44 1284 755 844 fax

Norfolk

The Market Place
Reepham
Norfolk NR10 4JJ
+44 1603 871 443
+44 1603 872 973 fax

Midlands

Knowle

The Old House
Station Road
Knowle, Solihull
West Midlands
B93 0HT
+44 1564 776 151
+44 1564 778 069 fax

Oxford

Banbury Road
Shipton on Cherwell
Kidlington OX5 1JH
+44 1865 853 640
+44 1865 372 722 fax

Yorkshire & North East England

Leeds

30 Park Square West
Leeds LS1 2PF
+44 113 234 5755
+44 113 244 3910 fax

North West England

Chester

2 St Johns Court,
Vicars Lane,
Chester,
CH1 1QE
+44 1244 313 936
+44 1244 340 028 fax

Manchester

The Stables
213 Ashley Road
Hale WA15 9TB
+44 161 927 3822
+44 161 927 3824 fax

Channel Islands

Jersey

La Chasse
La Rue de la Vallée
St Mary
Jersey JE3 3DL
+44 1534 722 441
+44 1534 759 354 fax

Representative:

Guernsey

+44 1481 722 448

Scotland

Edinburgh ●

22 Queen Street
Edinburgh
EH2 1JX
+44 131 225 2266
+44 131 220 2547 fax

Bonhams West of Scotland

Kirkhill House
Broom Road East
Newton Mearns
Glasgow
G77 5LL
+44 141 223 8866
+44 141 223 8868 fax

Representatives:

Wine & Spirits

Tom Gilbey
+44 1382 330 256

Wales

Cardiff

7-8 Park Place,
Cardiff CF10 3DP
+44 2920 727 980
+44 2920 727 989 fax

EUROPE

Belgium

Boulevard
Saint-Michel 101
1040 Brussels
+32 (0) 2 736 5076
belgium@bonhams.com

Denmark

Henning Thomsen
+45 4178 4799
denmark@bonhams.com

France

4 rue de la Paix
75002 Paris
+33 (0) 1 42 61 10 10
paris@bonhams.com

Germany - Cologne

Albertusstrasse 26
50667 Cologne
+49 (0) 221 2779 9650
cologne@bonhams.com

Germany - Munich

Maximilianstrasse 52
80538 Munich
+49 (0) 89 2420 5812
munich@bonhams.com

Greece

7 Neofytou Vamva Street
Athens 10674
+30 (0) 210 3636 404
athens@bonhams.com

Ireland

31 Molesworth Street
Dublin 2
+353 (0) 1 602 0990
dublin@bonhams.com

Italy - Milan

Via Boccaccio 22
20123 Milano
+39 0 2 4953 9020
milan@bonhams.com

Italy - Rome

Via Sicilia 50
00187 Roma
+39 0 6 48 5900
rome@bonhams.com

The Netherlands

De Lairessestraat 154
1075 HL Amsterdam
+31 (0) 20 67 09 701
amsterdam@bonhams.com

Portugal

Rua Bartolomeu Dias nº
160. 1º
Belem
1400-031 Lisbon
+351 218 293 291
portugal@bonhams.com

Spain - Barcelona

Teresa Ybarra
+34 930 086 803
barcelona@bonhams.com

Spain - Madrid

Nunez de Balboa no 4-1A
28001 Madrid
+34 915 78 17 27
madrid@bonhams.com

Spain - Marbella

James Roberts
+34 952 90 62 50
marbella@bonhams.com

Switzerland - Geneva

Rue Etienne-Dumont 10
1204 Geneva
+41 (0) 22 300 3160
geneva@bonhams.com

Switzerland - Zurich

Andrea Bodmer
Dreikönigstrasse 31a
8002 Zürich
+41 44 281 9535
zurich@bonhams.com

MIDDLE EAST

Israel

Joslynnne Halibard
+972 (0)54 553 5337
joslynnne.halibard@
bonhams.com

NORTH AMERICA

USA

San Francisco ●

220 San Bruno Avenue
San Francisco
CA 94103
+1 (415) 861 7500
+1 (415) 861 8951 fax

Los Angeles ●

7601 W. Sunset Boulevard
Los Angeles
CA 90046
+1 (323) 850 7500
+1 (323) 850 6090 fax

New York ●

580 Madison Avenue
New York, NY
10022
+1 (212) 644 9001
+1 (212) 644 9007 fax

Representatives:

Arizona

Terri Adrian-Hardy
+1 (480) 994 5362
arizona@bonhams.com

California

Central Valley
David Daniel
+1 (916) 364 1645
sacramento@bonhams.com

Colorado

Julie Segraves
+1 (720) 355 3737
colorado@bonhams.com

Florida

Jon King
Palm Beach
+1 (561) 651 7876
Miami
+1 (305) 228 6600
Ft. Lauderdale
+1 (954) 566 1630
florida@bonhams.com

Georgia

Mary Moore Bethea
+1 (404) 842 1500
georgia@bonhams.com

Illinois

Ricki Blumberg Harris
+1 (773) 267 3300
+1 (773) 680 2881
chicago@bonhams.com

Massachusetts

Amy Corcoran
+1 (617) 742 0909
boston@bonhams.com

Nevada

David Daniel
+1 (775) 831 0330
nevada@bonhams.com

New Mexico

Michael Bartlett
+1 (505) 820 0701
newmexico@bonhams.com

Oregon

Sheryl Acheson
+1(503) 312 6023
oregon@bonhams.com

Texas

Amy Lawch
+1 (713) 621 5988
texas@bonhams.com

Virginia

Gertraud Hechl
+1 (540) 454 2437
virginia@bonhams.com

Washington

Heather O'Mahony
+1 (206) 218 5011
seattle@bonhams.com

Washington DC

Martin Gammon
+1 (202) 333 1696
washingtonDC
@bonhams.com

CANADA

Toronto, Ontario ●

Jack Kerr-Wilson
20 Hazelton Avenue
Toronto, ONT
M5R 2E2
+1 (416) 462 9004
info.ca@bonhams.com

Montreal, Quebec

David Kelsey
+1 (514) 341 9238
info.ca@bonhams.com

SOUTH AMERICA

Brazil

+55 11 3031 4444
+55 11 3031 4444 fax

ASIA

Hong Kong ●

Suite 2001
One Pacific Place
88 Queensway
Admiralty
Hong Kong
+852 2918 4321
+852 2918 4320 fax
hongkong@bonhams.com

Beijing

Suite 511
Chang An Club
10 East Chang An Avenue
Beijing 100006
+86(0) 10 6528 0922
+86(0) 10 6528 0933 fax
beijing@bonhams.com

Japan

Level 14 Hibiya Central
Building
1-2-9 Nishi-Shimbashi
Minato-ku
Tokyo 105-0003
+81 (0) 3 5532 8636
+81 (0) 3 5532 8637 fax
tokyo@bonhams.com

Singapore

Bernadette Rankine
11th Floor, Wisma Atria
435 Orchard Road
Singapore 238877
+65 (0) 6701 8038
+65 (0) 6701 8001 fax
bernadette.rankine@
bonhams.com

Taiwan

Summer Fang
37th Floor, Taipei 101 Tower
Nor 7 Xinyi Road, Section 5
Taipei, 100
+886 2 8758 2898
+886 2 8758 2897 fax
summer.fang@
bonhams.com

AUSTRALIA

Sydney

97-99 Queen Street,
Woollahra, NSW 2025
Australia
+61 (0) 2 8412 2222
+61 (0) 2 9475 4110 fax
info.aus@bonhams.com

Melbourne

Como House
Como Avenue
South Yarra
Melbourne VIC 3141
Australia
+61 (0) 3 8640 4088
+61 (0) 2 9475 4110 fax
info.aus@bonhams.com

AFRICA

Nigeria

Neil Coventry
+234 (0)7065 888 666
neil.coventry@bonhams.com

South Africa - Johannesburg

Penny Culverwell
+27 (0)71 342 2670
penny.culverwell@bonhams.com

Registration and Bidding Form

(Attendee / Absentee / Online / Telephone Bidding)

Please circle your bidding method above.

--	--	--	--

Paddle number (for office use only)

This sale will be conducted in accordance with Bonhams' Conditions of Sale and bidding and buying at the Sale will be regulated by these Conditions. You should read the Conditions in conjunction with the Sale Information relating to this Sale which sets out the charges payable by you on the purchases you make and other terms relating to bidding and buying at the Sale. You should ask any questions you have about the Conditions before signing this form. These Conditions also contain certain undertakings by bidders and buyers and limit Bonhams' liability to bidders and buyers.

Data protection – use of your information

Where we obtain any personal information about you, we shall only use it in accordance with the terms of our Privacy Policy (subject to any additional specific consent(s) you may have given at the time your information was disclosed). A copy of our Privacy Policy can be found on our website (www.bonhams.com) or requested by post from Customer Services Department, 101 New Bond Street, London W1S 1SR United Kingdom or by e-mail from info@bonhams.com.

Credit and Debit Card Payments

There is no surcharge for payments made by debit cards issued by a UK bank. All other debit cards and all credit cards are subject to a 2% surcharge on the total invoice price.

Notice to Bidders.

Clients are requested to provide photographic proof of ID - passport, driving licence, ID card, together with proof of address - utility bill, bank or credit card statement etc. Corporate clients should also provide a copy of their articles of association / company registration documents, together with a letter authorising the individual to bid on the company's behalf. Failure to provide this may result in your bids not being processed. For higher value lots you may also be asked to provide a bank reference.

If successful

I will collect the purchases myself

Please contact me with a shipping quote (if applicable)

Sale title: Asian Art	Sale date: Wednesday 13 July 2016
Sale no.: 23498	Sale venue: Edinburgh

If you are not attending the sale in person, please provide details of the Lots on which you wish to bid at least 24 hours prior to the sale. Bids will be rounded down to the nearest increment. Please refer to the Notice to Bidders in the catalogue for further information relating to Bonhams executing telephone, online or absentee bids on your behalf. Bonhams will endeavour to execute these bids on your behalf but will not be liable for any errors or failing to execute bids.

General Bid Increments:

£10 - 200by 10s	£10,000 - 20,000by 1,000s
£200 - 500by 20 / 50 / 80s	£20,000 - 50,000by 2,000 / 5,000 / 8,000s
£500 - 1,000by 50s	£50,000 - 100,000by 5,000s
£1,000 - 2,000by 100s	£100,000 - 200,000by 10,000s
£2,000 - 5,000by 200 / 500 / 800s	above £200,000at the auctioneer's discretion
£5,000 - 10,000by 500s	

The auctioneer has discretion to split any bid at any time.

Customer Number	Title
First Name	Last Name
Company name (to be invoiced if applicable)	
Address	
City	County / State
Post / Zip code	Country
Telephone mobile	Telephone daytime
Telephone evening	Fax
Preferred number(s) in order for Telephone Bidding (inc. country code)	
E-mail (in capitals)	
By providing your email address above, you authorise Bonhams to send you marketing material and news concerning Bonhams and partner organisations. Bonhams does not sell or trade email addresses.	
I am registering to bid as a private client <input type="checkbox"/>	I am registering to bid as a trade client <input type="checkbox"/>
If registered for VAT in the EU please enter your registration here: □□ / □□□ - □□□□ - □□	Please tick if you have registered with us before <input type="checkbox"/>

Please note that all telephone calls are recorded.

Telephone or Absentee (T / A)	Lot no.	Brief description	MAX bid in GBP (excluding premium & VAT)	Covering bid*

FOR WINE SALES ONLY

Please leave lots "available under bond" in bond I will collect from Park Royal or bonded warehouse Please include delivery charges (minimum charge of £20 + VAT)

BY SIGNING THIS FORM YOU AGREE THAT YOU HAVE READ AND UNDERSTAND OUR CONDITIONS OF SALE AND WISH TO BE BOUND BY THEM, AND AGREE TO PAY THE BUYER'S PREMIUM AND ANY OTHER CHARGES MENTIONED IN THE NOTICE TO BIDDERS. THIS AFFECTS YOUR LEGAL RIGHTS.

Your signature: _____ Date: _____

* Covering Bid: A maximum bid (exclusive of Buyers Premium and VAT) to be executed by Bonhams only if we are unable to contact you by telephone, or should the connection be lost during bidding.

NB. Payment will only be accepted from an account in the same name as shown on the invoice and Auction Registration form.

Please email or fax the completed Auction Registration form and requested information to:

Bonhams, Customer Services, 101 New Bond Street, London, W1S 1SR. Tel: +44 (0) 20 7447 7447 Fax: +44 (0) 20 7447 7401, bids@bonhams.com

Bonhams 1793 Limited. Montpelier Street, London SW7 1HH. Incorporated in England. Company Number 4326560.



£ 1793

Bonhams

22 Queen Street
Edinburgh
EH2 1JX

+44 (0) 131 225 2266

+44 (0) 131 220 2547 fax

